



Norman C. Heckler & Company

May 18, 2011
Auction 92



A Select Absentee Auction Of Antique Bottles & Glass



12th Annual

Columbus Day Weekend Event

Woodstock, CT - Saturday October 8, 2011



McCandless Memorial Event

9:00 am - 11:00 am

Preview a live "country barn" auction - 75 McCandless Collection items that will be auctioned off at 11:00 am.

9:00 am - 2:00 pm

Old-Fashioned Tailgate Party, Antique Bottle and Glass Swap - In the Heckler hayfield.

9:00 am - 12:00 pm

A preview of our upcoming October 19, 2011 & November 16, 2011 McCandless Absentee Auctions. A timely opportunity to view these items!

11:00 am

Participate in the live auction 75 McCandless Collection Items.

12:30 pm

McCandless memorial "cook out" for all attendees.

Throughout The Day

Shop through our small antique shop housed in our Civil War era auction barn. Sample several New England traditions including Woodstock Orchard's fresh apple cider.

Mark your calendars for our largest event ever!

Auction 92
A Select Absentee Auction
of
Bitters Bottles, Pressed Glass, Historical Flasks, Rare Freeblown
and Pattern Molded Glass and Tableware Items, Blown Three
Mold, Food Bottles, Medicines and More

Preview by appointment: May 2, 2011 ~ May 17, 2011
Auction Start Date: May 4, 2011 at 9:00 A.M. Eastern Time
Auction Closing Date: May 18, 2011 at 10:00 P.M. Eastern Time

Reference Key

Reference initials and numbers used in the descriptions of this catalog refer to the following publications:

AG	<i>Antique Glass and Bottles, Willy Van den Bossche, 2001.</i>
AP	<i>Glass In Early America, Arlene Palmer, 1993.</i>
Barret	<i>Bennington Pottery and Porcelain, Richard C. Barret, 1958.</i>
B/K	<i>The Glass Industry in Sandwich, Raymond Barlow and Joan Kaiser, 1989.</i>
C	<i>Ink Bottles and Inkwells, William Covill, 1971.</i>
D	<i>American Sarsaparilla Bottles, John DeGrafft, 1980.</i>
Du	<i>Collector's Guide to Poison Bottles, Roger Durlinger, 1973.</i>
G	<i>(Flasks) American Bottles & Flasks (PartVIII), Helen McKearin and Kenneth Wilson, 1978.</i>
G	<i>(Blown Three Mold) American Glass (Chapter VI), George S. and Helen McKearin, 1941.</i>
H	<i>American Bottles in the Charles B. Gardner Collection, Norman C. Heckler, 1975.</i>
NCH	<i>The Blaske Collection of American Flasks, Norman C. Heckler, 1983.</i>
NCH II	<i>The Blaske Collection: Part II, Norman C. Heckler, 1983.</i>
K	<i>Poison Bottle Workbook, Rudy Kuhn, 1988.</i>
KW	<i>New England Glass & Glassmaking, Kenneth M. Wilson, 1972.</i>
L	<i>The Red Book of Fruit Jars, No. 9, Douglas M. Leybourne, Jr., 2001.</i>
Lee	<i>American Glass Cup Plates, Ruth Webb Lee and James H. Rose, 1948.</i>
LRB	<i>The Complete Book of Lightning Rod Balls, Mike Bruner and Rod Krupka, 1995.</i>
McK	<i>American Glass, George S. and Helen McKearin, 1941.</i>
MW	<i>American Bottles & Flasks and Their Ancestry, George McKearin and Kenneth Wilson, 1978.</i>
N	<i>Great American Pontiled Medicines, Frederick Nielson, 1978.</i>
Na	<i>Barber Bottles with Price, Robert Namiat, 1977.</i>
P	<i>The Glass Gaffers of New Jersey, Adeline Pepper, 1971.</i>
PG	<i>Pittsburgh Glass, Lowell Innes, 1976</i>
PME	<i>Pontil Medicine Encyclopedia (Second Edition), John Odell, 2007.</i>
R/H	<i>Bitters Bottles, Carlyn Ring and W. C. Ham, 1998.</i>
RD	<i>Understanding Antique Wine Bottles, Roger Dumbrell, 1983.</i>
RH	<i>Collecting Barber Bottles, Richard Holiner, 1986.</i>
T	<i>Collectors Guide to Saratoga Type Mineral Water Bottles, Donald Tucker, 2006.</i>

CONDITIONS OF SALE

1. **Absentee Auction:** The items in this catalog will be sold at unreserved **absentee auction**, closing date **Wednesday, May 18, 2011**.
2. **Descriptions:** Norman C. Heckler & Company has made every attempt to describe correctly the property being sold. Descriptions are guaranteed to be accurate as regards authenticity, age, condition, and measurements to within one-fourth inch, as represented in this catalog. In describing damage, exterior wear or manufacturer's flaws that in our opinion, do not significantly detract visually or monetarily from the value of the item are not listed and will not be considered for refund. The Auctioneers reserve the right to make verbal corrections and provide additional information at any time during the sale.
3. **Preview :** Items may be viewed by appointment from May 2, 2011 through May 17, 2011.
4. **Bidding Procedure:** Bidding on an item may be done in one of five ways: 1. Bidding by telephone, 2. Internet Bidding, 3. Submitting bids by Fax, 4. Bids submitted by email (valid only if bid is confirmed by Norman C. Heckler & Company) 5. Bidding by Mail.

Your bid, written, oral or electronic, grants Norman C. Heckler & Company the authority to protect you up to the amount of your stated bid. **Your bid will not be removed once executed.**

You may telephone us at any time (weekdays 9 A.M. - 5 P.M.) during the auction, prior to the closing of the sale, to check the status of your bids, to find the current bidding level, to open a bid, or to raise a bid on an auction lot.

MINIMUM BID IS ONE-HALF THE LOW ESTIMATE

		<i>Increments are as follows:</i>	
Up to \$250.00.....	increments of \$10.00	\$1000.00 - \$2500.00.....	increments of \$100.00
\$250.00 - \$500.00.....	increments of \$25.00	\$2500.00 - \$5000.00.....	increments of \$250.00
\$500.00 - \$1000.00.....	increments of \$50.00	\$5000.00 - \$10000.00.....	increments of \$500.00
	\$10,000 & Up.....		increments of \$1000.00

An example - You bid \$900.00 on a lot which is the highest bid received to date. The second highest bid is \$550.00. The current high bidding level would be yours at \$600.00. Any other bids submitted by others below \$900.00 will be automatically topped by a representative of Norman C. Heckler & Company, bidding on your behalf.

Norman C. Heckler & Company will not disclose bids pledged by others; only the current bidding level of a lot will be stated upon request.

The highest bidder shall prevail. It is the sole right of the auctioneer to settle any dispute between bidders and to regulate the bidding procedure. The auctioneer reserves the right to refuse any bid believed not to have been made in good faith.

Each lot in the sale has an estimate based on current value as an intended guide to bidding. Bids may be made daily, until closing day, May 18, 2011, from 9 A.M. - 5 P.M. Eastern Time. Incoming bids will be accepted on the closing day (Wednesday, May 18, 2011, until 10 P.M. Eastern time).

If bidding by mail we urge you to send your mail bids as early as possible. We are pleased to receive bids by telephone so that we can answer any questions and assist you in your bidding.

5. **Return Call or "Call Back" Process:** If requested, the three top bidders of an item at the time of closing will be given a "Call Back" over the next number of days in order to resolve the final sale of an item. You can request this service by "checking" the appropriate box on your absentee bid form, checking the box online as part of internet bidding or by verbal agreement over telephone.

If you have requested a "Call Back", the auctioneers will need to contact you on the days following the auction closing between the hours of 8 A.M. and 9 P.M. Eastern Time. Bidders must provide the appropriate telephone numbers where they can be contacted. Bidders who are in transit must call Norman C. Heckler & Company during the Call Back period twice daily. Bidders with Call Back privileges on an item may call our office at any time when timing on that item seems essential.

Only the top three bidders at the sale closing are entitled to "Call Backs". It is the responsibility of the bidder to insure he has qualified for this service.

The bidder will forfeit his rights to a "Call Back" if the auctioneers are unable to reach that bidder.

No "Call Backs" will be executed for bids under \$500.00 for this auction. In the event of tie bids, the earliest received bid will be the winning bid.

Norman C. Heckler & Company reserves the right to discontinue "Call Backs" (3) three days after the closing date of the sale.

6. **Successful Bidders:** Successful bidders will be notified by mail. A 17% buyer's premium will be added to the hammer price to be paid by the buyer as part of the purchase price. Payment is due immediately upon receipt of notification of purchase. No exceptions.

If you are a Connecticut resident, a 6% sales tax will be added to your bill, unless you provide Norman C. Heckler & Company with a tax exemption permit. Sales tax is also applicable to out of state buyers who pick up their purchases at our location unless you have a tax exempt number from Connecticut or your state on file with us. Purchases will be shipped only after full payment has been received. All items will be shipped via United States Postal Service. Shipping, handling and insurance are extra. Our charges for shipping (excluding foreign shipments) are \$20.00 for the first item, \$9.00 for each additional item together with extra insurance costs (\$0.60 per \$100.00). **We encourage you to plan for a pickup of your items at our offices.**

7. **Refunds:** Refunds will be given at the discretion of the Auctioneers. Items purchased must be examined and a request for refund made **immediately** upon receipt of the item or items. Since opinions can differ, particularly in the matter of condition, the Auctioneers will be the sole judge in the consideration of refunds. Refunds requested on the grounds of authenticity must be made within 15 days of the date of the auction, and such refund requests must be accompanied by at least one supporting statement in writing from an authority recognized by the Auctioneers. **Absolutely no returns after 30 days of the closing of the sale.** It is the Auctioneers sincere intention to consider any reasonable request for a refund.

8. **Bidding on any item indicates your acceptance of these terms.**



1. "C. Heimstreet. / Troy NY" - "Soda Water" Bottle, probably Albany Glass Works, Albany, New York, 1848-1850. Cylindrical, emerald green with a blue cast, applied sloping collared mouth - iron pontil mark, ht. 6 7/8 inches, base dia. 2 1/2 inches; (Heimstreet embossing somewhat weak). Slightly different form than most sodas, a bit smaller. Currently, the only known example of this bottle. \$4000-8000



2. Scroll Flask, probably Louisville Glass Works, Louisville, Kentucky, 1845-1860. Olive amber, sheared mouth - pontil scar, half pint. GIX-34 Great condition, extremely rare and unlisted color. Exceptional. \$2000-4000



3. Freeblown Creamer, probably Lockport Glass Works, Lockport, New York, 1840-1860. Unusual tapered body to narrow throated neck to a flared mouth with pour spout, solid applied circular base and hollow applied ear handle, "Lockport" blue tooled rim with pour spout - pontil scar, ht. 5 1/2 inches. A most unusual form, fine condition, beautifully applied handle with rigaree. Ex George McKearin collection with McKearin collection label attached to base. \$1000-2000





4. **Eagle - Tree Historical Flask**, Kensington Glass Works, Philadelphia, Pennsylvania, 1830-1850. Aquamarine, sheared mouth - pontil scar, pint. GII-41 Fine condition, bright glass, strong impression. \$200-400



6. **"Success To The Railroad" and Horse and Cart Historical Flask**, Keene Marlboro Street Glassworks, Keene, New Hampshire, 1830-1850. Yellow olive, sheared mouth - tubular pontil scar, pint. GV-3 Exceptional example, brilliant glass, strong embossing. \$250-500



8. **"Holtzermann's / Patent / Stomach / Bitters" Figural Bitters Bottle**, America, 1880-1890. In the form of a two-story log cabin, reddish amber, sloping collared mouth - smooth base, ht. 9 5/8 inches; (weak embossed lettering). R/H #H154 Fine condition. \$200-400



10. **Washington - Taylor Portrait Flask**, Dyottville Glass Works, Philadelphia, Pennsylvania, 1860-1870. Pale bluish green, sheared mouth - smooth base, quart. GI-37 Good color, fine condition. \$200-400



5. **"J. H. Cutter / Old / Bourbon / (Barrel with initials JHC) / C.P. Moorman / Manufacturers / Louisville. K.Y." Whiskey Bottle**, America, 1870-1890. Cylindrical, yellow, tooled sloping collared mouth with ring - smooth base, ht. 12 inches; (professionally cleaned with very few remaining scratches near the shoulder). Strong embossing, exceptional color with lots of embossing. \$400-800



7. **Pattern Molded Covered Sugar Bowl**, 12 diamond pattern, probably America, 1780-1820. Cylindrical bowl tapering to an applied cylindrical foot, cobalt blue, sheared rim with matching cover and applied conical finial - pontil scar, bowl dia. 3 7/8 inches, overall ht. 5 1/2 inches. Fine color and condition. Early and important. \$400-800



9. **Freeblown Chestnut Bottle**, New England, 1783-1830. Light yellow olive, outward rolled mouth - pontil scar, ht. 7 3/4 inches. Pretty light color, fine condition. \$200-400



11. **"Dr. Townsend's / Sarsaparilla / Albany / NY" Medicine Bottle**, America, 1840-1860. Square with beveled corners, yellowish olive, applied sloping collared mouth - pontil scar, ht. 9 inches. D #206 Fine condition, good color, strong embossing. Small lettered example. \$300-600



12

12. **Masonic Arch and Emblems - "IP" and Eagle Historical Flask**, Keene Marlboro Street Glassworks, Keene, New Hampshire, 1820-1830. Light yellowish green, inward rolled mouth - pontil scar, pint.
GIV-1a Beautiful bottle, an exceptional example. \$300-600



13

13. **"Dr. Petzold's / Genuine / German / Bitters / Incpt 1882" Figural Bitters Bottle**, America, 1860-1880. Oval modified log cabin form, yellow amber, applied sloping collared mouth with ring - smooth base, ht. 10 3/8 inches.
R/H #P74 Fine condition, strong embossing, pretty color. \$200-400



14

14. **Owl Perched On Mortar And Pestle / "ODCo.(monogram)" Poison or Medicine Bottle**, America, 1880-1900. Square with beveled corners, cobalt blue, tooled round collared mouth - smooth base embossed "Trademark Whithall Tatum Company", ht. 9 3/8 inches.
Unlisted Fine condition, beautiful deep cobalt color. \$300-600



15

15. **Ribbed and Swirled Club Bottle**, 24 ribs, possibly a Zanesville glassworks, Zanesville, Ohio, 1820-1830. Cylindrical beehive form, light blue green, heavy applied collared mouth - pontil scar, ht. 8 inches, base dia. 4 1/4 inches; (some minor interior haze at the shoulder may wash out). Form similar to MW color plate V #4 Beautiful bottle with a color deeper than most. \$200-400



16

16. **Cornucopia - Urn Pictorial Flask**, probably Coventry Glass Works, Coventry, Connecticut, 1830-1848. Bright clear green, sheared mouth - pontil scar, half pint.
GIII-7 Great color, fine condition, exceptional example. \$200-400



17

17. **Masonic Arch and Emblems - Eagle Historical Flask**, Keene Marlboro Street Glassworks, Keene, New Hampshire, 1820-1830. Olive amber, sheared mouth - tubular pontil scar, pint; (some exterior wear mainly on the eagle wings and either side of the medial rib).
GIV-17 Good color, good embossing. \$200-400



18

18. **Early Wine bottle**, England, 1700-1710. Cylindrical squat form, dark yellow olive, sheared mouth with string rim - pontil scar, ht. 5 1/4 inches, greatest dia. 5 1/2 inches; (overall patina, two shallow 1/4 inch surface bruises on the shoulder, three chips to the string rim).
Similar to RD plate #12, MW plate 52 #4 Good early wine bottle. The neck has an interesting tilt. \$750-1500



19

19. **Fancy Scroll Flask**, Pittsburgh district, Pittsburgh, Pennsylvania, 1830-1850. Aquamarine, sheared mouth - pontil scar, pint.
GIX-44 Beautiful corseted form, bright color, strong embossing. Fine example. \$500-1000



20

20. "Old Sachem / Bitters / And / Wigwam Tonic" Figural Bitters Bottle, America, 1860-1880. Barrel form, golden amber, applied round collared mouth - smooth base, ht. 9 1/4 inches. R/ H #O46 Fine condition, partial label on reverse. \$200-400

21. Sunburst Flask, an oval panel on each side of a heavy vertically ribbed flask, America, 1820-1830. Medium blue green, inward rolled mouth - pontil scar, half pint; (some exterior high point wear on the vertical ribs). GVIII-29 Good example, good color. \$200-400



21



22

22. "Lafayette" and Bust - "De Witt Clinton" and Bust Portrait Flask, Coventry Glass Works, Coventry, Connecticut, 1824-1825. Shaded light yellow olive, sheared mouth - pontil scar, pint; (some minor exterior high point wear on the collars of each bust). GI-80 An exceptional flask, this particular example is light in weight and color. Generally with examples that are this light, the embossing gets to be somewhat diminished. In this case the embossing is strong. \$1500-3000

23. Pattern Molded Flask, muted diamond pattern, probably Europe, 1820-1850. Circular flattened form, brilliant amethyst, sheared mouth - pontil scar, ht. 6 3/4 inches. Beautiful pattern, beautiful color, particularly long neck. \$300-600



23



24

24. Freeblown Drinking Vessel, America, possibly Redford Glass Works, Redford, New York, circa. 1850. Deep bowl on a solid baluster stem and flat circular foot made from one gather of glass, pale cornflower blue, sheared mouth - pontil scar, ht. 5 5/8 inches, bowl dia. 3 1/4 inches. Pretty and perfect. \$300-600

25. Freeblown Globular Bottle, probably a Zanesville glasshouse, Zanesville, Ohio, 1820-1840. Golden amber, outward rolled mouth - pontil scar, ht. 8 1/2 inches; (some exterior high point wear and scratches). Similar to AP #341 Beautiful color, rarer than the patterned examples. \$300-600



25



26

26. "Dr. Tebbetts' / Physiological / Hair / Regenerator" Medicine Bottle, America, 1860-1870. Rectangular with beveled corners and indented panels, light puce, applied double collared mouth - smooth base, ht. 7 1/2 inches; (potstone bruise in neck with two 1/8th inch radiations). Exceptional color. \$300-600

27. Bust of Grant Within Wreath - Eagle and "Union" Portrait Flask, probably Pittsburgh district, Pittsburgh, Pennsylvania, 1860-1880. Aquamarine, applied mouth with ring - smooth base, pint; (wear spot 1 inch by 1 1/2 inches by the word Union). GI-79 McKearin lists this flask as rare. \$250-500



27



28

28. "Geo. Benz / & / Sons / Appetine / Bitters. / St. Paul, Minn." Fancy Figural Bitters Bottle, America, 1880-1900. Square with fancy shoulders and corners with four indented panels, one of which is embossed, black amethyst, tooled sloping collared mouth - smooth base marked "Pat / Applied / For", ht. 7 7/8 inches. R/H #A78 Fine condition. Rare color. \$350-700



29

29. "Good / Game" And Stag - Willow Tree Pictorial Flask, probably Coffin and Hay Manufacturers, Hammonton, New Jersey, 1840-1860. Aquamarine, sheared mouth - pontil scar, pint; (some light interior haze). GX-1 Strong embossing, a good candidate for a light professional cleaning. \$200-400



30

30. "Bininger's / Travelers Guide / A.M. Bininger & Co/ No. 19 Broad St. N.Y." Whiskey Pocket Flask, America, 1860-1870. Yellow amber, applied double collared mouth - smooth base, half pint, lgth. 6 3/4 inches. Good color, wonderful condition, exceptional example. \$400-800



31

31. "Success To The Railroad" And Horse and Cart - Eagle Historical Flask, Coventry Glass Works, Coventry, Connecticut, 1830-1848. Yellow olive, sheared mouth - tubular pontil scar, pint; (irregular shallow bubble burst on the eagle side near the medial rib is a manufacturer's flaw). GV-8 Strong embossing, good color, a fine example. \$250-500



32

32. Scroll Flask, probably Louisville Glass Works, Louisville, Kentucky, 1845-1860. Lime green, applied collared mouth with ring - iron pontil mark, pint. GIX-10b Great condition, brilliant clear glass, wonderful color. Superior example. \$500-1000



33

33. Freeblown Sugar Bowl, probably early Pittsburgh district, Pittsburgh, Pennsylvania, 1820-1840. Short bulbous bowl with applied circular foot and wide tooled galleried rim, high domed cover with applied pontiled finial, cobalt blue, sheared rim - pontil scar, overall ht. 5 inches; (though the colors match, as does the technique, the cover for the bowl is somewhat smaller than the galleried rim). Form similar to "Pittsburgh Glass" by Lowell Innes, 1976. plate #43 Beautiful diminutive tableware in a classy form. \$750-1500



34

34. "Louis Kossuth" And Bust - "U.S. Steam Frigate / Mississippi / S. Huffsey" And Frigate Portrait Calabash Flask, probably a New Jersey glassworks, 1845-1860. Aquamarine, applied sloping collared mouth - iron pontil mark, quart. GI-112 Fine condition, strong embossing. \$200-400



35

35. Masonic Arch and Emblems - Eagle Historical Flask, Keene Marlboro Street Glassworks, Keene, New Hampshire, 1820-1830. Yellow olive, sheared mouth - pontil scar, half pint. GIV-24 Fine condition, strong embossing. \$250-500



36. **Eagle - "Willington/Glass, Co." Historical Flask**, Willington Glass Works, West Willington, Connecticut, 1840-1860. Forest green, sheared mouth - pontil scar, pint.
GII-64 Fine condition, good embossing, great color. Almost no exterior high point wear. \$500-1000



37. **Pattern Molded Club Bottle**, ribbed and swirled to the right, 24 ribs, a Zanesville glassworks, Zanesville, Ohio, 1820-1840. Beehive form, light to medium yellow green, applied collared mouth - pontil scar, ht. 7 3/4 inches; (1/2 inch bruise at mid body with two 1/2 inch legs from the point of impact).
Form similar to color plate V #4 Beautiful and rare color. \$400-800



38. **Two Miniature Freeblown Tableware Items**, a pitcher and bowl, probably Lockport Glass Works, Lockport New York, 1840-1860. Brilliant aquamarine, sheared and tooled rims - pontil scars, pitcher ht. 3 1/4 inches, bowl dia. 3 1/4 inches.
Early freeblown miniatures in fine condition. \$300-600



39. **"Simon's Centennial Bitters" Figural Bottle**, America, 1860-1880. In the form of the bust of George Washington, shaded reddish amber with yellow sleeves and head, applied double collared mouth - smooth base, ht. 9 3/4 inches; (3/4 inch horizontal fissure on the side of Washington's right sleeve).
R/H #S110 Beautiful color, generally fine condition. \$1200-2400



40. **Pair of Early Wine Bottles**, England, 1810-1830. Cylindrical form, deep yellow olive with a blue and gray green cast, applied short sloping collared mouths - pontil scars, ht. 9 inches, base dia. 4 3/8 inches; (one example has mouth roughness).
Similar form to MW plate 52 #10 Beautiful bottles, early, exceptional color. \$200-400



41. **Sunburst Flask**, America, possibly Baltimore Glass Works, Baltimore, Maryland, 1820-1830. Brilliant aquamarine, inward rolled mouth - pontil scar, half pint.
GVIII-25 Beautiful bottle. \$200-400



42. **Double Eagle Historical Flask**, Louisville Glass Works, Louisville, Kentucky, 1845-1860. Light yellow green, sheared mouth - iron pontil mark, pint.
GII-24 Good condition, fine color, good embossing. Very pretty bottle. \$500-1000



43. **Freeblown Chestnut Bottle**, New England, 1783-1830. Yellow olive, applied mouth - pontil scar, ht. 7 inches; (3/4 shallow bubble burst on one shoulder).
Beautiful early example. \$200-400



44

44. **Pitkin Type Flask**, ribbed and swirled to the left, 36 ribs, probably Pitkin Glass Works, Manchester, Connecticut, 1783-1830. Light yellowish green, sheared mouth - tubular pontil scar, ht. 7 inches. Fine condition with strong mold impression. Exceptional example. Ex George Austin collection. \$400-800



45

45. **"Success To The Railroad" And Horse and Cart Historical Flask**, Mount Vernon Glass Works, Vernon, New York, 1830-1850. Deep olive amber, sheared mouth - huge tubular pontil scar, pint; (slightly weakened impression at the shoulders and slightly under blown at the base, which does not substantially affect the embossing or the wagon). GV-5 \$250-500



46

46. **"Greeley's / Bourbon Whiskey / Bitters."** Figural Bitters Bottle, America, 1860-1880. Barrel form, deep cherry red, applied square collared mouth - smooth base, ht. 9 inches; (1/4 inch flat chip from the side of the square collared mouth). R/H #G102 \$200-400



47

47. **"KY.G.W. Co." Base Embossed Coffin Flask**, Kentucky Glass Works, Louisville, Kentucky, 1860-1870. Golden yellow with a slight green tone, applied mouth with ring - smooth base, quart; (shallow 1/8 inch bubble burst on one rib). Unlisted Beautiful color, lots of bubbles in the glass, an unusual size. We have never seen this flask. Probably extremely rare. \$300-600



48

48. **Labeled Umbrella Ink Bottle**, New England, 1840-1860. Octagonal umbrella form, golden amber, tooled mouth - tubular pontil scar, ht. 2 5/8 inches. Similar to C#141 Partial label reads "Cold Black Ink, New York". Bottle in fine condition, good color, fine New England example. \$200-400



49

49. **"Independent Order of Odd Fellows" Ceramic Transfer Pitcher**, England, 1820-1840. Pleasing pitcher form with applied figural greyhound handle and multicolor transfer design of figures and symbols, ht. 5 7/8 inches; (3/4 inch flat chip from the base). Finely executed, interesting decoration. Good condition. \$300-600



50

50. **"Dr. Hartshorns / Medicine" Bottle**, a Stoddard glasshouse, Stoddard, New Hampshire, 1860-1870. Oval, brilliant golden amber, crudely applied square collared mouth - smooth base, 6 inches. A rare Stoddard medicine in great condition with strong embossing and good color. \$1000-2000



51

51. **Eagle - "Ravenna / (Anchor) / Glass/ Company" Historical Flask**, Ravenna Glass Works, Ravenna, Ohio, 1860-1870. Golden amber, applied mouth with ring - smooth base, pint; (3/8 inch flat flake on top of the mouth, some interior stain). GII-37 Interior stain may wash out. \$400-800



52

52. **Freeblown and Looped Covered Sugar Bowl and Matching Creamer**, a Pittsburgh glasshouse, Pittsburgh Pennsylvania, 1840-1850. The sugar bowl in a bulbous form to a galleried rim with matching high domed cover, the creamer of bulbous form flaring slightly to the rim and tooled pour spout with a solid colorless handle, tooled rims - open pontil scars, overall sugar bowl ht. 7 1/2 inches, creamer ht. 4 3/8 inches.

PG plate 48, 36, 135, 433 and 488 for examples of forms, colors and pedestals, etc. Both examples are on colorless, pontiled, pedestaled bases. An extremely rare example of a matched sugar bowl and creamer in an extremely rare pedestaled form. Beautiful, perfect, exceptional.

\$4000-8000



53

53. "Flora Temple / (full figure of horse) / Harness Trot 2:19 3/4" **Handled Pictorial Flask**, Whitney Glass Works, Glassboro, New Jersey, 1860-1870. Puce, applied mouth with ring - smooth base, pint; (3/4 inch area of shallow chips on the side of the mouth).
GXIII-21 Beautiful color. \$350-700



54

54. "B.O. & G. C. Wilson / Botanic Druggists / Boston" **Large Medicine Bottle**, America, 1840-1860. Rectangular with beveled corners, aquamarine, applied square collared mouth - tubular pontil scar, ht. 9 3/4 inches, wdth. 3 1/2 inches, dpth. 2 1/2 inches; (some light interior haze).
Big and beautiful. \$200-400



55

55. **Pitkin Type Flask**, ribbed and swirled to the right, 24 ribs, Midwest America, 1800-1830. Emerald green, sheared mouth - pontil scar, ht. 6 1/2 inches; (some exterior high point wear particularly along one rib).
Beautiful color, generally fine condition. \$350-700



56

56. "Washington" And Bust - "Jackson" And Bust **Portrait Flask**, Keene Marlboro Street Glassworks, Keene, New Hampshire, 1830-1850. Yellow amber, sheared mouth - pontil scar, pint; (slightly weakened embossing in the shoulder).
GI-31 Fine condition, beautiful color. \$250-500



57

57. "Traveler's / (8 Pointed Star) Companion" - "Lancaster / (8 Pointed Star) / Erie. Co., N.Y" **Lettered Flask**, Lancaster Glass Works, Lancaster, New York, 1860-1870. Pale green, applied double collared mouth - smooth base, pint.
GXV-5 Strong embossing, attractive light color. \$250-500



58

58. **Blown Three Mold Decanter**, Keene Marlboro Street Glassworks, Keene, New Hampshire, 1820-1840. Bulbous, yellow olive, sheared mouth - pontil scar, pint.
GIII-16 Strong mold, fine New England color, good condition. \$400-800



59

59. **Eagle - "Willington/Glass, Co." Historical Flask**, Willington Glass Works, West Willington, Connecticut, 1860-1873. Yellowish forest green, applied double collared mouth - smooth base, half pint.
GII-63a Fine example with strong embossing. A hard mold to acquire. \$300-600



60

60. **Pattern Molded Creamer**, 14 vertical ribs, possibly a Pittsburgh glasshouse, Pittsburgh, Pennsylvania, 1830-1850. Slightly bulbous with sloping neck to a slightly flared rim, small applied solid handle, deep sapphire blue, sheared rim with pour spout - pontil scar, ht. 5 inches.
Pretty color, fine condition. \$300-600



61

61. "Thos Drums/Excellent/Prevention/For Cholera/Cincinnati.O" Figural Medicine Bottle, America, 1845-1860. Wedge shape, "Hemingray" blue, applied sloping collared mouth - red iron pontil mark, ht. 7 5/8 inches.

Unlisted Currently the only example known. Unusual form, strong embossing, professionally cleaned to original luster with little or no indication that the cleaning has taken place. \$5000-10000



62. "Lafayette" And Bust - Masonic Arch and Emblems Portrait Flask, Coventry Glass Works, Coventry, Connecticut, 1824-1825. Brilliant light yellow olive, sheared mouth - pontil scar, half pint. GI-84 Beautiful color, strong embossing, a superior example.

\$7500-15000



62



63. **Double Eagle Historical Flask**, Coventry Glass Works, Coventry, Connecticut, 1830-1848. Yellow olive, sheared mouth - pontil scar, half pint.
GII-71 Fine example with good color, strong embossing and fine condition. \$200-400



64. **Freeblown Black Glass Food Jar**, probably England, 1810-1830. Cylindrical, yellow olive with a blue cast at the base, crudely applied sloping collared mouth - pontil scar, ht. 7 3/4 inches, base dia. 3 7/8 inches, mouth dia. 1 3/4 inches; (some light interior haze).
Beautiful, early jar, possibly made from a wine bottle. There is small scratched etching on the shoulder that appears to read "WN / 1W1OY2". \$300-600



65. **Pitkin Type Flask**, ribbed and swirled to left, 36 ribs, probably Pitkin Glass Works, Manchester, Connecticut, 1783-1830. Light yellow olive, sheared mouth - pontil scar, ht. 5 1/8 inches.
Wonderful example with good color and strong definition. \$300-600



66. **Double Eagle Historical Flask**, Kentucky Glass Works, Louisville, Kentucky, 1840-1860. Eagles in plain ovals on a vertically ribbed body, pale aquamarine, sheared mouth - pontil scar, quart.
GII-31 Great condition. \$200-400



67. **"Union" And Clasped Hands - Eagle Historical Flask**, Pittsburgh district, Pittsburgh, Pennsylvania, 1860-1870. Golden yellow, applied collared mouth with ring - smooth base, pint; (interior stain in the lower portion of the flask).
Similar to GXII-19 except no embossed lettering in the oval panel Great color, good embossing, would respond well to a professional cleaning. \$300-600



68. **Hunter - Fisherman Pictorial Calabash Flask**, probably Whitney Glass Works, Glassboro, New Jersey, 1845-1860. Peachy puce, applied sloping collared mouth - iron pontil mark, quart.
GXIII-4 Fine condition, great color. Real pretty bottle. \$300-600



69. **Digestine / Bitters / P.J. Bowlin Liquor Co. / Sole Proprietors/ St. Paul, Minn" Bitters Bottle**, America, 1880-1900. Square with fancy shoulders, reddish amber, applied tooled collared mouth - smooth base, ht. 8 inches; (1/4 inch flat flake on the side of the mouth).
R/H #D73 \$200-400



70. **"Keen" / P & W" Sunburst Flask**, Keene Marlboro Street Glassworks, Keene, New Hampshire, 1820-1830. Medium yellow olive, sheared mouth - pontil scar, pint.
GVIII-8 Fine condition, stronger embossing than usual. Beautiful color. Ex Roy Brown collection. \$600-1200



71

71. **Freeblown Glass Compote**, Boston and Sandwich Glass Works, Sandwich, Massachusetts, 1828-1835. Beehive form, colorless, tooled rim - ground pontil scar, ht. 7 1/4 inches, dia. 8 inches. Construction similar to B/K #268 through #1272 A rare and early Sandwich Glass Works product. \$500-1000



72

72. **"R. Lenox." Sealed Wine Bottle**, England, 1760-1790. Cylindrical with applied seal at the shoulder, deep olive amber, applied collared mouth - pontil scar, ht. 11 1/8 inches, base dia. 3 3/4 inches. Similar form to RD plate 33 Near perfect condition. Retains some of the wax sealer on the mouth. \$250-500



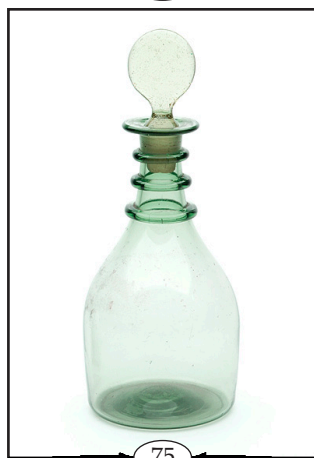
73

73. **Eagle Perched On Mortar And Pestle - "Poison / The Owl Drug Co." Poison Bottle**, America, 1880-1900. Triangular, cobalt blue, tooled square collared mouth - smooth base, ht. 9 1/2 inches. K #KT-1 Great example, deep rich color. \$500-1000



74

74. **"M. G. Landsberg / Chicago" Fancy Figural Bitters Type Bottle**, America, 1870-1880. Square with diamond columned corners, the arches highly decorated with an eagle, "1876", a rayed sun and a union shield, brilliant yellow amber, applied sloping collared mouth with ring - smooth base, ht. 11 inches. Follows R/H #15 Perfect condition, beautiful color, extremely fancy bottle, peened out lettering on one panel. \$1200-2400



75

75. **Freeblown Decanter With Period Stopper**, a New Jersey glasshouse, New Jersey, 1820-1840. Straight sided form tapering to three heavy applied neck rings, yellowish green, tooled flared mouth with stopper - pontil scar, overall ht. 10 1/4 inches. Great condition, very early decanter in a wonderful form and beautiful color. \$500-1000



76

76. **"Browns / Celebrated / Indian Herb Bitters" Figural Bitters Bottle**, America, 1860-1880. In the form of an Indian maiden, light yellow amber, inward rolled mouth - smooth base, ht. 12 1/4 inches; (about 1/2 of rolled mouth is missing, whether that be the result of manufacture or damage, it is hard to determine). R/H #B226 Bright, clean bottle, pretty color. \$400-800



77

77. **Eagle - "Willington/Glass, Co" Historical Flask**, Willington Glass Works, West Willington, Connecticut, 1860-1873. Deep golden amber, applied double collared mouth - smooth base, quart. GII-61 Beautiful bottle, strong embossing. Many seed bubbles throughout. \$500-1000



78

78. **Large Freeblown Candlestick**, early Pittsburgh district, Pittsburgh, Pennsylvania, 1815-1830. Colorless shaft in the air twist technique, tooled socket rim - ground pontil scar, ht. 11 1/2 inches; (freeblown socket has been detached, ground and reglued to the stick). Similar to TH plate 92 #1 A rare American freeblown candlestick. Nicely repaired. \$200-400



79

79. **"I: W/ (Eight Pointed Star)" Sealed Wine Bottle**, England, 1700-1730. Cylindrical with seal just below the shoulder, medium to dark olive green, sheared mouth with string rim - pontil scar, ht. 7 3/8 inches, base dia. 5 1/2 inches; (exterior wear from usage at the widest portion of the bottle, 1/8 inch flake from the underside of the string rim). Similar to RD page 79 figure a, MW plate 52 #6 Handsome bottle, beautiful deep color. \$2000-4000



80

80. **"The / Fish Bitters" Figural Bottle**, America, 1860-1880. In the form of a fish, yellow with a green tone, applied single round collared mouth - smooth base, ht. 11 1/2 inches; (collared mouth covers a rough spot of the sheared mouth done during manufacture). R/H #F46 Fine condition, extremely beautiful and rare color.



81



81. **"Genl Taylor Never Surrenders" And Cannon - "A / Little / More / Grape / Capt Bragg" Historical Flask**, Baltimore Glass Works, Baltimore, Maryland, 1830-1850. Deep fiery plum, sheared mouth - pontil scar, pint. GX-5 Beautiful unlisted deep color, strong embossing, great condition. \$8000-16000

\$3000-6000



82

82. "The / Fish Bitters" Figural Bottle, America, 1860-1880. In the form of a fish, golden amber, small applied round collared mouth - smooth base, ht. 11 1/2 inches; (some exterior high point wear).
R/H #F45 Fine condition, pretty light color. \$200-400



83

83. Freeblown Jar With Ball Cover, probably Suncook Glass Works, Suncook, New Hampshire, 1840-1850. Cylindrical, brilliant aquamarine, flared mouth with matching colored ball stopper - pontil scar, overall ht. 11 1/2 inches; (some very minor interior haze).
Fine condition, beautiful form. \$250-500



84

84. Pillar Molded Covered Compote, Pittsburgh district, Pittsburgh, Pennsylvania, 1820-1850. Eight pillar mold form, colorless, tooled galleried rim with matching cover - ground pontil scar, bowl dia. 7 inches, overall ht. 10 inches.
Fine condition. \$300-600



85

85. "Trelaske" Sealed Wine Bottle, England, 1820-1830. Cylindrical with a circular seal just below the shoulder, three piece mold, deep yellow olive, applied sloping collared mouth with ring - pontil scar, ht. 10 1/2 inches; (some very minor exterior scratches).
Good looking bottle, good condition. \$250-500



86

86. "W.B. Bordman. / Old. Bourbon" Whiskey Bottle, America, 1860-1870. Square tapered gin form, yellow olive, applied double collared mouth - smooth base, ht. 9 inches; (some light iridescence to the panel on the left of the embossing, where the bottle may have laid on a cellar floor).
Extremely rare, good embossing, beautiful color. Nice early bottle. \$400-800



87

87. Blueberry Preserve Bottle, Willington Glass Works, West Willington, Connecticut, 1860-1872. Cylindrical with petaled shoulder panels, golden amber with a reddish tone, applied double collared mouth - smooth base, ht. 11 inches.
Similar to MW color plate VIII #4 Fine example full of tiny seed bubbles. \$750-1500



88

88. Lot of Three Similar Pressed Glass Candlesticks, Boston and Sandwich Glass Works, Sandwich, Massachusetts, 1840-1880. Each with a six petaled socket attached with a wafer to a dolphin on a square base, one example has a single tiered base, two examples have a double tiered base, vaseline, ht. 9 1/4 inches, 9 7/8 inches and 10 3/8 inches; (each has minor chips to the petaled socket).
B/K #4055 and 4056 \$250-500



89

89. "Drake's / 1860 / Plantation / X / Bitters" Figural Bottle, America, 1860-1880. Square tall log cabin form, six logs, yellow olive, applied sloping collared mouth - smooth base, ht. 9 7/8 inches.
R/H #D105 Great condition. One of the few Drakes that we have seen with so much olive as a part of the color. \$500-1000



90

90. "Vino Castellano / De Brown" Figural Bitters Type Bottle, America, 1845-1860. Tall pyramid shape with a fancy footed base and fancy multi sided shoulder and neck, golden yellow with an olive tone, applied collared mouth with ring - large red iron pontil mark, ht. 12 inches; (1/4 inch fissure on the back panel).

Unlisted Extremely rare, perhaps unique. Beautiful form and color. Possibly associated with the same company as the Castilian Bitters. Probably made for the Western market. \$1000-2000



91. Pair Of Fluid Lamps With Period Burners, probably Boston and Sandwich Glass Works, Sandwich, Massachusetts, 1820-1840. Freeblown fonts attached with wafers to pressed triple waterfall bases, aquamarine, sheared mouths with burners - pontil scars, ht. 7 1/4 inches; (some chipping at some of the base corners).

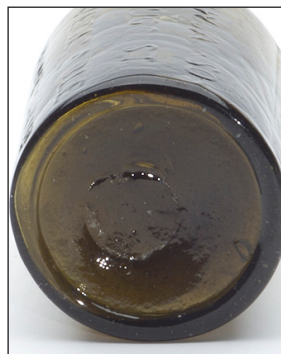
Form similar to B/K #2048 Barlow Kaiser indicates that "colored early lamps are very, very rare". This exceptional example is a pair in every sense. Having aquamarine pressed bases, together with aquamarine freeblown fonts of the same gather. \$3500-7000



91



92



92. "Dr. H.W. Jackson / Druggist / Vegetable / Home Syrup" Medicine Bottle, Coventry Glass Works, Coventry, Connecticut, 1830-1848. Cylindrical, yellow olive, applied sloping collared mouth - pontil scar, ht. 4 7/8 inches.

N #329 Fine condition. Rare. A Coventry Glass Works product made for a Columbia, Connecticut doctor, who would have lived only ten miles away from the glassworks. \$4000-8000



93

93. **Pattern Molded Globular Bottle**, 24 ribs swirled to the right, probably a Zanesville glasshouse, Zanesville, Ohio, 1820-1840. Golden amber, outward rolled mouth - pontil scar, ht. 7 1/4 inches; (some minor exterior scratches around the widest portion of the bottle and faint 3/4 inch hairline fissure at mid-body).
Similar to MW color plate 5 #1 Beautiful brilliant color. \$250-500



94

94. **"For Pike's Peak" and Prospector - Hunter Shooting Deer Historical Flask**, Pittsburgh district, Pittsburgh, Pennsylvania, 1860-1870. Medium blue green with profuse amber striations, applied mouth with ring - smooth base, half pint; (potstone with two 1/2 inch legs on reverse and sand grain with two 1/8th inch legs on obverse).
GX1-52 Beautiful and rare color. \$250-500



95

95. **"A. P. Smith / Charleston / SC" Soda Water Bottle**, America, 1845-1860. Cylindrical, cobalt blue, applied sloping collared mouth - iron pontil mark, half pint; (professionally cleaned to original luster).
A great, early, colorful, rare bottle. \$300-500



96

96. **"A.M. Bininger & Co. 338 Broadway, N.Y. / Old Kentucky Bourbon" Figural Whiskey Bottle**, America, 1840-1860. Barrel form, golden amber, applied double collared mouth - pontil scar, ht. 8 inches; (weakened impression in the lettering near the top of the barrel). \$200-400



97

97. **Scroll Flask**, probably Louisville Glass Works, Louisville, Kentucky, 1845-1860. Golden amber, sheared mouth - pontil scar, pint; (some minor exterior high point wear, pinhead flake on one of the ribs).
GIX-14 Beautiful color, brilliant glass. \$300-600



98

98. **Pitkin Type Flask**, ribbed and swirled to the right, 36 ribs, probably Pitkin Glass Works, Manchester, Connecticut, 1783-1830. Yellow olive, sheared mouth - pontil scar, ht. 7 inches.
A great example with strong ribbing and swirls. \$400-800



99

99. **Early Wine Bottle**, England, 1730-1750. Cylindrical, medium to deep olive green, sheared mouth with applied string rim - pontil scar, ht. 7 inches, base dia. 5 inches; (some very minor exterior wear).
Similar to RD figure 121, MW plate 52 #8 Fine condition. \$500-1000



100

100. **"The Father of His Country" And Bust - Reverse Plain Portrait Flask**, Lockport Glass Works, Lockport, New York, 1845-1860. Brilliant medium blue green, applied round collared mouth - iron pontil mark, quart.
GI-47 Fine condition. \$500-1000



101

101. "Keen" - "P & W" Sunburst Flask, Keene Marlboro Street Glassworks, Keene, New Hampshire, 1820-1830. Yellow olive, sheared mouth - pontil scar, half pint.
GVIII-9 Fine condition, good color. \$400-800

102. Blown Three Mold Handled Mug, Keene Marlboro Street Glassworks, Keene, New Hampshire, 1820-1840. Straight sided mug with solid applied handle, colorless, ht. 3 1/2 inches.
GIII-18 Great condition, with no handle attachment problem as is usual for this type of item. Strong embossing. \$1500-3000



102



103

103. Masonic Arch and Emblems - Eagle Historical Flask, Keene Marlboro Street Glassworks, Keene, New Hampshire, 1820-1830. Clear green, sheared mouth - pontil scar, pint; (two parallel 3 inch crack lines in the decorative part of the Masonic arch).
GIV-10b Beautiful, heavy Masonic flask. \$200-400

104. "Smith & Co. / Premium / Soda Water / Charleston" Soda Water Bottle, America, 1845-1860. Eight sided form with embossing on alternate panels, bright medium green, applied heavy collared mouth - iron pontil mark, half pint; (professionally cleaned with some remaining etching and scratches).
A rare, beautiful Charleston soda. \$300-600



104



105

105. "Old Sacher/Bitters/ And/ Wigwam Tonic" Figural Bitters Bottle, America, 1860-1880. Barrel form, brilliant light to medium golden amber, applied round collared mouth - smooth base, ht. 9 1/4 inches.
R/H # O46 Great condition, beautiful color, fine example. \$200-400

106. "Traveler's (Eight Pointed Star) / Companion" - "Ravenna (Eight Pointed Star) / Glass Co" Flask, Ravenna Glass Works, Ravenna, Ohio, 1845-1860. Deep golden amber, applied round collared mouth - iron pontil mark, pint.
GXIV-3 Good color, fine condition. \$600-1200



106



107

107. Freeblown Chestnut Bottle, New Jersey, 18th century. Light to medium green, crudely outward rolled mouth - pontil scar, ht. 8 1/4 inches; (some minor exterior high point wear).
Fine early bottle, distinctly different from the other chestnut types. \$200-400

108. "Lafayette" And Bust - Liberty Cap And Pole Portrait Flask, Coventry Glass Works, Coventry, Connecticut, 1824-1825. Brilliant yellow olive, sheared mouth - pontil scar, pint. "Lafayette" lettering somewhat weakened
GI-85 Beautiful color, fine condition. \$800-1600



108



109

109. **Small Pattern Molded Pitcher**, probably Emil Larson, New Jersey, circa 1930. Diamond pattern, bulbous with narrow throat to a flared mouth with applied solid handle and foot, cobalt blue with amber handle and foot, outward rolled rim with pour spout - pontil scar, ht. 5 3/4 inches. Beautiful, rare, different. \$200-400

110. **Masonic Arch and Emblems - Eagle Historical Flask**, Keene Marlboro Street Glassworks, Keene, New Hampshire, 1820-1830. Yellow olive, sheared mouth - pontil scar, pint. GIV-20 Bright clean example, fine condition. \$200-400



110



111

111. **"Union" And Clasped Hands - Eagle Historical Flask**, Pittsburgh district, Pittsburgh, Pennsylvania, 1860-1870. Golden amber, applied collared mouth with ring - smooth base, half pint. GXII-29 Fine color, strong embossing, exceptional example. \$250-500

112. **"Washington Spring Co / (Bust of Washington) / Ballston Spa / N. Y" Mineral Water Bottle**, America, 1860-1880. Cylindrical, emerald green, applied sloping collared mouth with ring - smooth base, pint. T #561 Great color, strong embossing. \$400-800



112



113

113. **Ceramic Bear Figural Bottle**, probably Europe, possibly Russia, 1880-1900. In the form of a bear in a tall hat sitting on a stump, brown glaze, ht. 9 1/2 inches. Similar to the glass Kummel bears, particularly the applied face type. Fine condition, most unusual. \$200-400

114. **"Success To The Railroad" And Horse And Cart Historical Flask**, Keene Marlboro Street Glassworks, Keene, New Hampshire, 1830-1850. Aquamarine, sheared mouth - pontil scar, pint. GV-3 Extremely rare in aquamarine. Fine condition, good embossing, brilliant glass. \$800-1600



114



115

115. **"J. Harvey & Co / Providence, RI" - "H" Soda Water Bottle**, America, 1840-1860. Cylindrical, medium yellow olive, heavy round collared mouth - pontil scar, half pint, ht. 7 inches. Great form, strong embossing, beautiful color, exceptional example. \$350-700

116. **Eagle - Oak Tree Historical Flask**, probably early Pittsburgh district, Pittsburgh, Pennsylvania, 1820-1840. Deep golden amber with an olive tone, sheared mouth - pontil scar, half pint; (epoxy repaired neck). GII-60 Beautiful bottle with strong embossing. \$250-500



116



117

117. **Cornucopia - Urn Pictorial Flask**, probably Coventry Glass Works, Coventry, Connecticut, 1830-1848. Greenish aquamarine, sheared mouth - tubular pontil scar, pint; (some minor high point wear on the fruit).
GIII-4 Rare color, fine condition. \$200-400

118. **"Bininger's / Regulator" Figural Whiskey Bottle**, America, 1840-1860. In the form of a clock, golden amber, applied double collared mouth - pontil scar, ht. 6 inches.
H #95 Fine condition. \$400-800



118

119. **Pottery Figural Bottle**, England, 19th century. Flintlock pistol form, brown Bennington type glaze, lgth. 9 inches; (flat 3/8 inch glaze chip on gun barrel).
Overall fine condition and an interesting figural form. \$200-400



119

120. **"Lowell / Railroad" And Horse And Cart - Eagle Historical Flask**, Coventry Glass Works, Coventry, Connecticut, 1830-1848. Yellow olive, sheared mouth - pontil scar, half pint; (a somewhat weakened impression on the eagle side).
GV-10 Fine condition, good color. \$200-400



120

121. **"Lafayette" and Bust - "De Witt Clinton" and Bust Portrait Flask**, Coventry Glass Works, Coventry, Connecticut, 1824-1825. Light yellow olive, sheared mouth - pontil scar, half pint.
GI-81 Exceptional example, brilliant color, fine embossing. \$2500-5000



121

122. **Pickle Jar**, America, 1860-1880. Square with beveled corners and fancy cathedral arches, bright green, outward rolled mouth - smooth base, ht. 8 5/8 inches.
Similar to MW plate 74 #12 Beautiful color, fine condition. \$500-1000



122

123. **Double Eagle Historical Flask**, two eagle medallions set on a vertically ribbed flask, probably Louisville Glass Works, Louisville, Kentucky, 1840-1860. Light bright blue green, sheared mouth - pontil scar, half pint.
GII-30 Good embossing. Pretty, attractive light color. Great condition. \$400-800



123

124. **Pitkin Type Flask**, ribbed and swirled to left, 36 ribs, Midwest America, 1800-1830. Golden amber, sheared mouth - pontil scar, pint, ht. 5 3/4 inches.
Similar to MW color plate IV #2 Beautiful bottle with strong ribbing and swirls, great color, fine condition. \$400-800



124



125

125. "Traveler's (Eight Pointed Star) Companion" - "Lancaster / (Eight Pointed Star) / Erie. Co., N.Y" Lettered Flask, Lancaster Glass Works, Lancaster, New York, 1860-1870. Greenish aquamarine, applied mouth with ring - smooth base, pint, ht. 7 5/8 inches; (some minor short scratches below the "E" in Erie).

GXIV-4

\$200-400

126. Seeing Eye Masonic Flask, a Stoddard glasshouse, Stoddard, New Hampshire, 1845-1860. Golden amber, sheared mouth - pontil scar, pint. GIV-43 Good color, strong embossing.

\$250-500



126



127

127. Early Decanter, possibly Keene Marlboro Street Glassworks, Keene, New Hampshire, 1820-1840. Square with vertical ribbing, shaded green with amber striations and wide swirls, tooled flared mouth - pontil scar, ht. 8 inches; (some light high point wear, pinhead sized flake on the side of the mouth).

Great condition, fine early example.

\$1000-2000

128. Early Bottle or Decanter, America, 1820-1860. Cylindrical with a three ribbed neck ring, white milkglass, applied double collared mouth - pontil scar, ht. 9 1/2 inches, base dia. 3 1/2 inches.

We have not seen this bottle before. It's early and perfect.

\$200-400



128



129

129. "London / Royal / Imperial Gin" Bottle, America, 1860-1880. Square with beveled corners, brilliant sapphire blue, applied sloping collared mouth - smooth base, ht. 9 1/2 inches.

Great condition, beautiful color, strong embossing, finest possible example.

\$1200-2400

130. Large Freeblown Bowl, found and probably manufactured in New Jersey, 1820-1850. Cylindrical, slightly flared to the mouth, deep greenish aquamarine, outward rolled rim - pontil scar, ht. 8 1/4 inches, base dia. 6 1/4 inches, rim dia. 9 5/8 inches.

Fine condition with some interior wear as would be expected from a utility piece that was used. A fine heavy example of a useful bowl in an early kitchen.

\$500-1000



130



131

131. "Turner Brothers / New York" Figural Whiskey Bottle, America, 1860-1880. Barrel form, black amethyst, applied square collared mouth - smooth base, ht. 9 3/4 inches; (3/16 inch flat flake on top of the mouth).

Similar to H#1761 Bright, clean example with strong embossing. We have never seen another black example.

\$400-800

132. Washington - Taylor Portrait Flask, Dyottville Glass Works, Philadelphia, Pennsylvania, 1860-1870. Copper topaz, applied sloping collared mouth with ring - smooth base, quart; (1/4 inch flat flake from the side of the sloping collared mouth).

GI-54 Fine condition, great color.

\$1000-2000



132



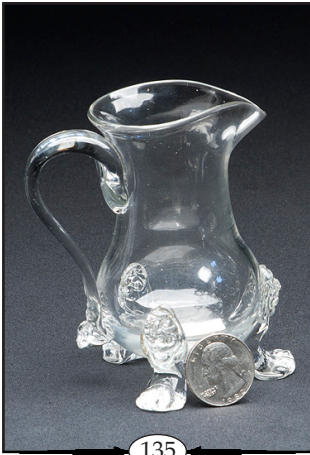
133

133. **Sunburst Flask**, Coventry Glass Works, Coventry, Connecticut, 1814-1830. Yellow olive, sheared mouth - pontil scar, half pint.
GVIII-16 Beautiful color, fine condition. \$400-800

134. **"Zanesville / Ohio / J. Shepard & Co" Masonic Arch and Emblems - Eagle Historical Flask**, J. Shepard & Company Manufacturers, Zanesville, Ohio, 1820-1830. Reddish amber, sheared mouth - pontil scar, pint; (mouth appears to be shortened).
GIV-32 Beautiful color, strong embossing. If the mouth has been shortened it has been done exceedingly well. \$250-500



134



135

135. **Freeblown Creamer**, probably England, 18th century. Bulbous flared to rim with pour spout, applied flattened solid ear handle, standing on three legs each adorned with a facial prunt at the top and a paw foot at the base, colorless, sheared rim - pontil scar, ht. 3 5/8 inches.
Most unusual with a highly decorated foot treatment to a simple formed pitcher (see front cover). \$300-600

136. **Scroll Flask**, probably Louisville Glass Works, Louisville, Kentucky, 1845-1860. Blue green, sheared mouth - pontil scar, pint.
GIX-11 Great color, fine condition. \$500-1000



136



137

137. **Freeblown Deep Bowl**, Midwest America, 1820-1850. Cylindrical flaring slightly to a outward rolled rim, amethyst, tooled rim - pontil scar, ht. 3 7/8 inches, base dia. 4 inches, rim dia. 6 1/8 inches; (some minor wear as would be expected through use).
An early, beautiful utilitarian item. Ex Darl Fifer collection \$1000-2000

138. **"H.F & B / N.Y." Figural Whiskey Bottle**, America, 1860-1870. Ribbed melon form with lettering on embossed seal, dense amethyst, applied sloping collared mouth with ring - smooth base, ht. 9 inches; (somewhat dull exterior appearance).
H #140 Fine condition, deep beautiful color. \$400-800



138



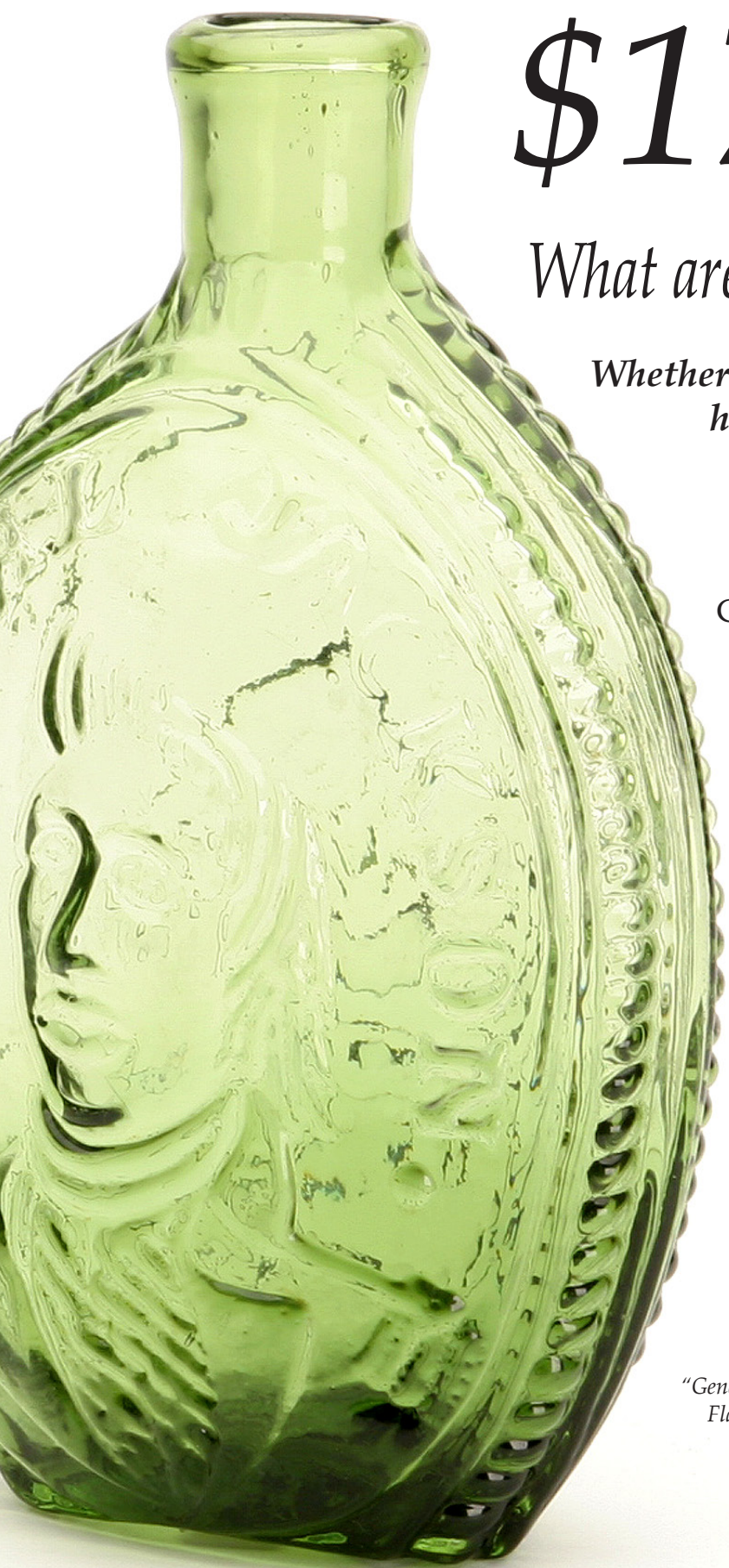
139

139. **"Lafayette" And Bust - Liberty Cap And Pole Portrait Flask**, Coventry Glass Works, Coventry, Connecticut, 1824-1825. Yellow olive, sheared mouth - pontil scar, half pint; (some exterior high point wear).
GI-86 Fine condition, strongly embossed, beautiful bottle. \$700-1400

140. **Blown Three Mold Miniature Creamer**, Boston and Sandwich Glass Works, Sandwich, Massachusetts, 1825-1840. Bulbous with narrow neck flaring to an inward rolled rim with pour spout, solid applied handle, cobalt blue with colorless handle, tooled rim - pontil scar, ht. 2 1/4 inches; (rigaree has been glued to the base of the handle).
Similar to B/K #3312 and TH plate 41 #2 An extremely rare miniature or child's toy. This is only the second known example with a colorless handle instead of the expected blue handle. \$1200-2400



140



\$176,670!

What are your glass items worth?

Whether you have a \$100 or \$100,000 item we have the right auction format for you.

Consignors will now benefit from a variety of new auction avenues that extend our commitment to showcase each individual lot for our 5000+ client list that receive every printed auction catalog.

Contact us to learn more.

We are now accepting consignments for our 2011 auction schedule

Pictured Left:

"General Jackson." And Bust - "J.R. / Laird. S.C. Pitt." - Eagle Portrait Flask in brilliant yellow green from John Robinson Manufacturers, Pittsburgh, Pennsylvania, 1820-1840.

Recently sold at a Hecklers auction for \$176,670.

An antique bottle record!

(860) 974-1634 | www.hecklerauction.com | info@hecklerauction.com

Next Absentee Sale Auction 93

Closing Date: September 14, 2011



Over 140 lots including:
Medicines, Flasks, Blown
Glass, Bitters, Insulators and
items from most antique bottle
categories.

*Accepting consignments for this
auction and December Absentee
Auction 96*

Catalog will be mailed to members of our mailing
list on August 7th, 2011.

For complete details go to www.hecklerauction.com

NEW!

Bid Online!

The screenshot shows the Heckler Auction website interface. At the top, the Heckler logo is displayed with the tagline 'Auctioneers of Antique Bottles and Glass, Period Decorative Arts, Singular Art Objects and Estates'. Below the logo is a navigation menu with links for SERVICES, ABOUT HECKLERS, UPCOMING AUCTIONS & EVENTS, PAST AUCTIONS, NEWS, MAP & DIRECTIONS, and CONTACT. The main content area is titled 'Upcoming Events' and features a section for 'ABSENTEE AUCTION 91' with a closing date of March 30, 2011. Below this, there is a photograph of several glass bottles in various colors (blue, green, yellow, brown). To the right of the main content, there is a sidebar with a 'Sign Up Now For Heckler Free Auction Catalogs' button and a list of upcoming events including 'MARCH 30, 2011 Fine Bottles, Flasks and Glass - Absentee Auction', 'APRIL 29, 2011 Live Auction Sale - Invitation Auction', 'May 27, 2011 Live Auction Sale - Invitation Auction', and 'JUNE 24, 2011 Live Auction Sale - Invitation Auction'. At the bottom of the main content area, there is a note about a printed catalog available for free to members of the mailing list.

You can now bid online at
www.hecklerauction.com



Norman C. Heckler & Company
Auctioneers & appraisers specializing in early glass & bottles
79 Bradford Corner Road, Woodstock Valley, Connecticut 06282
(860) 974-1634 www.hecklerauction.com fax (860) 974-2003

PRESORTED
STANDARD
U.S. POSTAGE
PAID
PERMIT #119
DEEP RIVER, CT



AUCTION 92
Closing May 18, 2011