



1. **Pattern Molded Cologne Bottle**, sixteen vertical ribs, Midwest America, possibly Mantua Glass Works, Mantua, Ohio or Kent Glass Works, Portage County, Ohio, 1822-1850. Bulbous form with long extended neck, sapphire blue, inward rolled mouth - pontil scar, ht. 5 1/2 inches. Beautifully executed glass in fine condition. Found in Piqua, Ohio.  
\$1000-2000



2. **Washington Bust - "Albany Glassworks / NY" Portrait Flask**, Albany Glassworks, Albany, New York, 1847-1850. Brilliant golden amber, sheared mouth - tubular pontil scar, pint. GI-30 An extremely rare color, fine condition and an interesting extended neck.  
\$7500-15000



3. **"Washington Spring Co / (Bust of Washington) / Ballston Spa / N.Y" Mineral Water Bottle**, America, 1860-1875. Cylindrical, emerald green, applied sloping collared mouth with ring - smooth base, pint; (very shallow 3/8 inch bubble burst on reverse). T #S61 Great color, strong embossing, fine condition.  
\$1000-2000



4. **Pattern Molded Open Salt Cellar**, sixteen ribs swirled to the left, probably Mantua Glass Works, Mantua, Ohio, 1820-1840. Double ogee bowl on a short standard with circular foot, light to medium lavender, sheared mouth - pontil scar, ht. 2 3/4 inches, greatest dia. 2 7/8 inches. Similar to Mck plate 80 #12 Fine condition, beautiful color, exceptional example.  
\$1000-2000



AUCTION 90 ~ Closing October 27, 2010

RESORTED  
STANDARD  
U.S. POSTAGE  
PAID  
PERMIT #119  
DEEP RIVER, CT

Norman C. Heckler & Company  
Auctioneers & appraisers specializing in early glass & bottles  
79 Bradford Corner Road, Woodstock Valley, Connecticut 06282  
(860) 974-1634 www.hecklerauction.com fax (860) 974-2003





# Auction 90

## An Important Absentee Auction of Fine Bottles & Flasks, Bitters, Freeblown Glass & Much More

*Preview by appointment: October 9, 2010 ~ October 25, 2010*  
**Auction Closing Date: October 27, 2010 at 10:00 P.M. Eastern Time**

### Reference Key

Reference initials and numbers used in the descriptions of this catalog refer to the following publications:

AP	<i>Glass In Early America, Arlene Palmer, 1993.</i>
Barret	<i>Bennington Pottery and Porcelain, Richard C. Barret, 1958.</i>
B/K	<i>The Glass Industry in Sandwich, Raymond Barlow and Joan Kaiser, 1989.</i>
C	<i>Ink Bottles and Inkwells, William Covill, 1971.</i>
D	<i>American Sarsaparilla Bottles, John DeGrafft, 1980.</i>
Du	<i>Collector's Guide to Poison Bottles, Roger Durlflinger, 1973.</i>
G	<i>(Flasks) American Bottles &amp; Flasks (PartVIII), Helen McKearin and Kenneth Wilson, 1978.</i>
G	<i>(Blown Three Mold) American Glass (Chapter VI), George S. and Helen McKearin, 1941.</i>
H	<i>American Bottles in the Charles B. Gardner Collection, Norman C. Heckler, 1975.</i>
NCH	<i>The Blaske Collection of American Flasks, Norman C. Heckler, 1983.</i>
NCH II	<i>The Blaske Collection: Part II, Norman C. Heckler, 1983.</i>
K	<i>Poison Bottle Workbook, Rudy Kuhn, 1988.</i>
L	<i>The Red Book of Fruit Jars, No. 9, Douglas M. Leybourne, Jr., 2001.</i>
Lee	<i>American Glass Cup Plates, Ruth Webb Lee and James H. Rose, 1948.</i>
LRB	<i>The Complete Book of Lightning Rod Balls, Mike Bruner and Rod Krupka, 1995.</i>
McK	<i>American Glass, George S. and Helen McKearin, 1941.</i>
MW	<i>American Bottles &amp; Flasks and Their Ancestry, George McKearin and Kenneth Wilson, 1978.</i>
N	<i>Great American Pontiled Medicines, Frederick Nielson, 1978.</i>
Na	<i>Barber Bottles with Price, Robert Namiat, 1977.</i>
P	<i>The Glass Gaffers of New Jersey, Adeline Pepper, 1971.</i>
PME	<i>Pontil Medicine Encyclopedia (Second Edition), John Odell, 2007.</i>
R/H	<i>Bitters Bottles, Carlyn Ring and W. C. Ham, 1998.</i>
RD	<i>Understanding Antique Wine Bottles, Roger Dumbrell, 1983.</i>
RH	<i>Collecting Barber Bottles, Richard Holiner, 1986.</i>
T	<i>Collectors Guide to Saratoga Type Mineral Water Bottles, Donald Tucker, 2006.</i>
TH	<i>Two Hundred Years Of American Blown Glass, Helen and George McKearin, 1949.</i>
U	<i>Collectible Character Bottles, Authur Umberger, 1969.</i>
Z	<i>Ketchup, Pickles, Sauces, Betty Zumwalt, 1980.</i>

- The dash is generally used to indicate that the descriptions are on opposite sides of the bottle or flask.
- / The slash is used to indicate that the descriptions are on different lines or surfaces of the bottle.



## Join Us at Our 11th Annual Columbus Day Event! Saturday, October 9, 2010

Preview a "country barn" auction that will take place at 11 am.  
 Auction includes approximately 75 glass and antique related items. Participate in an Old-Fashioned Tailgate Party, Antique Bottle and Glass Swap - In the Heckler hayfield.  
**FREE SETUP.**

Preview this October 27th Absentee Auction!



5

5. "John Moffat / New York / Phoenix / Bitters" Bottle, America, 1840-1860. Rectangular with beveled corners, "old" golden amber, outward rolled mouth - tubular pontil scar, ht. 5 1/4 inches. R/H #M113 Beautiful and extremely rare color and mold. Fine condition, many seed bubbles, some at the surface. \$1500-3000



6

6. Freeblown Pitcher, Pittsburgh district, Pennsylvania, 1830-1860. Bulbous form with two tooled mouth rings and applied solid handle, cobalt blue, tooled rim with pour spout - pontil scar, ht. 7 3/8 inches. Similar form to Pittsburgh Glass by Lowell Innes, page 95 right Beautiful form, great condition, vibrant color. \$3000-6000



7

7. Sunburst Flask, probably Baltimore Glass Works, Baltimore, Maryland, 1820-1830. Light yellowish green, sheared mouth - pontil scar, pint; (some light interior stain). GVIII-26 Would respond well to a light professional cleaning. Interesting mouth in that it appears to have a pour spout. Beautiful light to medium color. \$1000-2000



8

8. Freeblown Salt Cellar On Standard, probably Coventry Glass Works, Coventry, Connecticut, 1820-1850. Bulbous bowl with flared mouth on a knopf stem and circular solid foot, yellow olive, sheared rim - pontil scar, ht. 3 3/8 inches, base dia. 2 7/8 inches; (almost one half of the solid flat circular base has been broken and reglued). An extremely rare bottle glass table item. \$1000-2000



9

9. "Skerrett's Oil / B. Wheeler / W. Henrietta / Mon. Co. N.Y." Medicine Bottle, probably Lockport Glass Works, Lockport, New York, 1843-1860. Cylindrical, Lockport blue green, applied sloping collared mouth - tubular pontil scar, ht. 6 inches, base dia. 2 1/8 inches; (a small area of short scratches on the shoulder above B. Wheeler). N #586 Beautiful color, fine condition, rare mold and good strong embossing. \$2000-4000



10

10. Freeblown Glass Bank or Money Box, New England, 1840-1860. Conical money receptacle separated by a wafer to a hollow knopf and solid circular foot, all adorned with four strips of fancy rigaree and raspberry prunts, colorless, tooled coin slot - pontil scar, ht. 5 3/4 inches. Similar to forms Mck plate 59 Extremely rare and in virtually perfect condition. \$1250-2500



11

11. Two "Granite / Glass / Co" - "Stoddard / NH" Lettered Flasks, Granite Glass Works, Stoddard, New Hampshire, 1840-1870. Light yellow olive and red amber, sheared mouth and double collared mouth - tubular pontil scar and smooth base, pints. GXV-7 Beautiful colors, fine condition, both ex Charles B. Gardner collection. Great examples. \$1000-2000



12

12. "E.A. Buckhout's Dutch Liniment (Surrounding Full Figure of a Man with Pipe and Cane)" - "Prepared at / Mechanicville / Saratoga Co N.Y." Medicine Bottle, America, 1840-1860. Rectangular with beveled corners, deep aquamarine, inward rolled mouth - tubular pontil scar, ht. 4 5/8 inches. N#85 Brilliant color, strong embossing, fine condition. \$750-1500





13

13. **Blown Three Mold Open Salt Cellar**, blown three mold inkwell made into salt cellar with three applied feet, Coventry Glass Works, Coventry, Connecticut, 1820-1840. Cylindrical, yellow olive, outward rolled mouth - pontil scar, ht. 2 inches, greatest dia, 3 1/4 inches; (an unearthened item, some exterior wear, each of the feet have damage).  
GII-18 An unique item from the Coventry Glass Works that was discovered near an old mill five miles south of the factory in the village of South Coventry, Connecticut. \$1500-3000



15

14. **"General Jackson. " And Bust - "J.R. / Laird. S.C. Pitt." and Eagle Portrait Flask**, John Robinson Manufacturers, Pittsburgh, Pennsylvania, 1820-1840. Brilliant yellow green, inward rolled mouth - pontil scar, pint; (a reflection adjacent to a bubble at the interior of the base at the left side of the Jackson bust that occurred at the time of manufacture).  
GII-66 Extremely rare mold in an extremely rare color, perhaps unique. Particularly strong embossing. This flask was purchased by the consignors' father in 1971 from a Mr. Ernie Burger who had purchased the flask from a house in North Dayton, Ohio. The price was \$41.80. As the years went by Edmund Blaske offered \$750 and later Roy Brown offered a new Cadillac for the bottle. It has been in the family for the last 39 years and safely stored in a box. \$40000-80000



14

15. **"Heston & Tressel's / Eureka Jar / Pat'd. Feb. 7th 1888" Fruit Jar**, America, circa 1888. Cylindrical, colorless, tooled mouth with reproduction tin cover and wire and solid brass bail - smooth base, quart.  
L#250 An extremely rare jar in fine condition. \$2000-4000



16

16. **"Bourbon Whiskey / Bitters" Figural Bottle**, America, 1860-1880. Barrel form, light peachy puce, square collared mouth - smooth base, ht. 9 1/4 inches.  
R/H #G101 Fine condition, beautiful color, strong embossing, a light bright window bottle. \$1000-2000



17

17. **"Lafayette" and Bust - "Dewitt Clinton" and Bust Portrait Flask**, Coventry Glass Works, Coventry, Connecticut, 1824-1825. Medium olive amber, sheared mouth - pontil scar, half pint; (1/4 inch shallow narrow flake at the top of the seventh corrugated rib from the base on the Lafayette side, some exterior high point wear).  
GI-81 Fine example. The noted chip is a minor flaw. \$2500-5000



18

18. **Blown Three Mold Decanter**, Keene Marlboro Street Glassworks, Keene, New Hampshire, 1820-1840. Square with beveled corners, deep aquamarine almost a light sea green, tooled flared mouth - pontil scar, pint; (no stopper).  
GII-28 Great condition, beautiful color. \$1500-3000



19

19. **Two Base Embossed "Pat. Glass Pail / June 24 78 / Boston. Mass." Food Containers**, New England, probably Boston and Sandwich Glass Works, Sandwich, Massachusetts, 1878-1888. Cylindrical with three wide molded bands encircling body, light yellow and vaseline, ground mouths with applied tin collars and caps with wire bails - smooth bases, ht. 4 3/8 inches, greatest dia. 3 inches.  
L #20 Good colors, great condition. \$1000-2000



20

20. **Stiegel Type Pattern Molded Covered Sugar Bowl**, eleven ogival pattern, possibly American Flint Glass Manufactory, Manheim, Pennsylvania, 1763-1774. Graceful, hemispherical form with applied circular base having a fourteen vertical rib pattern, brilliant cobalt blue, sheared rim with matching cover in a twelve ogival pattern - pontil scar, overall ht. 5 inches. Similar to McK plate 31 #3 Ex John Williams collection sold at Richard Bourne Auction Company, lot # 144, October 16, 1976. \$2000-4000





21

21. **Freeblown Deep Bowl**, probably a South Jersey glassworks, 1840-1860. Circular base flaring to widely flared rim, deep greenish aquamarine, outward tooled rim - tubular pontil scar, ht. 3 inches, base dia. 3 inches, rim dia. 5 5/8 inches; (one inch bubble burst on the inside portion of the rim).  
Ex George McKearin collection, ex George Austin collection. Graceful utilitarian form. \$750-1500



23

22. **"U.S.N. / MED. / DEP. / LIQUORS" Medicine Bottle**, possibly the Mount Vernon Glass Works, Vernon, New York, 1830-1844. A hefty oversized square form with embossed tapered roof type shoulders, brilliant deep yellowish emerald green with an olive tone, applied sloping double collared mouth with interior of the mouth factory ground to receive a stopper - tubular pontil scar, ht. 10 3/8 inches, wdth. 3 1/4 inches, dpth. 3 1/4 inches.  
Unlisted. Only one other example is known. Fine condition with lots of whittled appearance and character. \$7500-15000



22

23. **Eagle - "New London / (Anchor) / Glass Works" Historical Flask**, New London Glass Works, New London, Connecticut, 1860-1866. Orange amber, applied double collared mouth - smooth base, half pint. GI-67 Fine condition with strong embossing. An unusual color. \$1200-2400



24

24. **Pressed Glass Covered Salt Cellar**, Boston and Sandwich Glass Works, Sandwich, Massachusetts, 1840-1860. Rectangular with scroll and basket design, cover has scroll design with pineapple finial, colorless, overall ht. 3 inches, lgth. 3 1/8 inches, wdth. 1 7/8 inches. B/K #1449 Correct lid, fine condition, extremely rare. \$750-1500



25

25. **"Neptune / Glass Works" - "Crowlyville. N.J" Medicine or Bitters Bottle**, Neptune Glass Works, Crowlyville, New Jersey, 1845-1860. Square with beveled corners, the vertical embossing is on opposite panels, yellow olive, applied sloping collared mouth - iron pontil mark, ht. 8 inches, wdth. 2 1/4 inches; (some very minor exterior spotty wear marks).  
Unlisted, extremely rare. \$2500-5000



26

26. **"General Washington" and Bust - "T.W.D" Eagle Portrait Flask**, Kensington Glass Works, Philadelphia, Pennsylvania, 1820-1840. Unusual medium gray green, sheared mouth - pontil scar, pint; (somewhat weakened impression in the shoulder area, otherwise fine condition).  
GI-14 Rare, unlisted color. \$3000-6000



27

27. **Two Freeblown Tableware Items**, a pitcher and a creamer, probably Redford, New York and Sand Lake, New York, 1830-1860. Bulbous bodies with flared necks and applied solid handles, the pitcher has an applied circular base, aquamarine, tooled rims with pour spouts - pontil scars, ht. 7 1/8 inches and 4 5/8 inches; (pitcher has 2 1/2 inch fissure at the upper handle attachment).  
Forms similar to McK plate 67 #1 and #7 Beautiful forms, bright clean examples. Both examples ex George Austin collection. \$1000-2000



28

28. **"Bartine's / Lotion" Medicine Bottle**, America, 1840-1860. Rectangular with narrow beveled corners, bright clear forest green, applied sloping collared mouth - tubular pontil scar, ht. 5 7/8 inches.  
N#42 Beautiful, clean, bright bottle with strong embossing. A cure for rheumatism. \$1200-2400

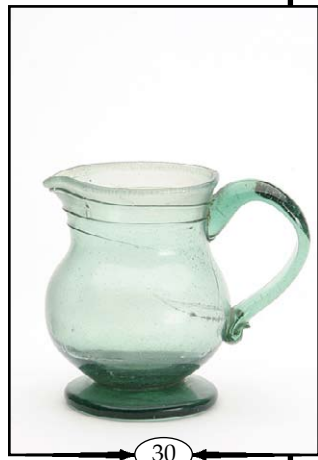




29

29. "C. Brinckerhoffs / Health Restorative / Price \$1.00/ New - York" Medicine Bottle, America, 1840-1860. Rectangular with wide beveled corners, medium bright yellow olive, wide sloping collared mouth - pontil scar, ht. 7 1/4 inches.

N#75 Great condition with strong embossing and wonderful color. \$1200-2400



30

30. Freeblown Small Pitcher, possibly Wistarburg or another early New Jersey glasshouse, 1780-1830. Bulbous form with a slightly flaring throat, applied solid ear shaped handle, applied solid circular foot, simple applied neck threading, light grayish green, tooled rim with pour spout - pontil scar, ht. 4 3/4 inches, greatest dia. 3 3/4 inches; (three 3/4 inch cooling cracks above the lower handle attachment).

Ex Fred Johnston collection. \$1500-3000



31

31. Jockey on Horseback - Hound Pictorial Flask, probably Baltimore Glass Works, Baltimore, Maryland, 1860-1870. Yellow amber with an olive tone, applied collared mouth with ring - smooth base, pint; (some very minor high point wear).

GXIII-17 Unusual color, fine condition, strong embossing. \$1000-2000



32

32. "Dr. Birmingham's / Antibillious / Blood Purifying / Bitters" Bottle, America, 1845-1860. Cylindrical with narrow vertical panels, five of which are embossed, medium bluish green, applied square collared mouth - iron pontil mark, ht. 9 inches; (some minor exterior wear above the panels around shoulder).

R/H #B101 Beautiful big bottle, rare. \$2500-5000



33

33. "General Washington." and Bust - "J.R." / "Laird. SC. Pitt." and Eagle Portrait Flask, John Robinson's Sturbridge Flint Glass Works, Pittsburgh, Pennsylvania, 1820-1840. Clear with a lavender tint, sheared mouth - pontil scar, pint.

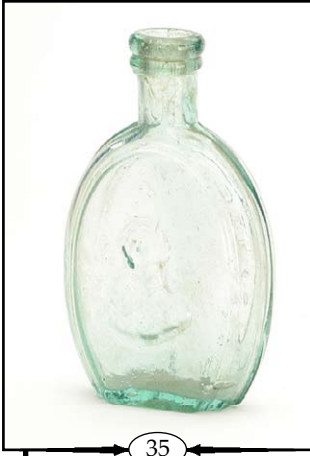
GI-6A Great example, brilliant glass, extremely strong impression. From a Pennsylvania collection. \$4000-8000



34

34. "W/Floyd / 1790" Sealed Wine Bottle, possibly America, circa. 1790. Cylindrical with applied circular seal at mid body, dark yellow olive, tooled mouth with applied string rim - pontil scar, ht. 9 1/8 inches, base dia. 4 inches; (1/2 inch shallow and flat chip from the base of the seal).

Form similar to McK plate 221 #7 William Floyd was born in 1734 on Long Island, New York and died in 1821 on land acquired along the Mohawk River. Floyd was a Major General in the army of the Revolutionary War. He was a signer of the Declaration of Independence and served in the First Continental Congress. Extremely rare and desirable. Ex Fred Johnston, Kingston, New York. \$4000-8000



35

35. Washington Bust- "Albany Glass Works / NY" Portrait Flask, Albany Glass Works, Albany, New York, 1847-1850. Light grayish green, applied double collared mouth - pontil scar, half pint.

GI-30 Fine example with an unusual mouth application. \$500-1000



36

36. Freeblown Creamer, probably Ellenville Glass Works, Ellenville, New York, 1836-1840. Bulbous with flaring throat and applied ear handle and applied circular solid foot, yellow olive, tooled rim with pour spout - pontil scar, ht. 3 1/2 inches, foot dia. 2 1/2 inches, greatest dia. 2 7/8 inches; (tail of handle rigaree is missing, 3 inch hairline fissure at the upper handle attachment).

Form similar to New England Glass by Kenneth Wilson, figure 89 Ex Fred Johnston collection. Great form and an early tableware piece. \$750-1500





37. **Freeblown Pitcher**, possibly Redwood Glass Works, Redwood, New York, 1830-1850. Bulbous body with long tapering neck to rim, applied strap handle and applied circular crimped foot, greenish aquamarine, sheared rim with spout - pontil scar, ht. 7 1/8 inches, greatest dia. 4 7/8 inches; (1/2 inch shallow chip on the top side of the crimped foot at a point under the spout, 1/2 inch heat fissure at the lower handle attachment and exterior wear around the greatest diameter).

Ex Henry F. DuPont, South Hampton collection, ex Fred Johnson collection. \$750-1500

38. **"Layfayette" and Bust - Masonic Arch and Emblems Historical Flask**, Coventry Glass Works, Coventry, Connecticut, 1824-1825. Light yellow olive, sheared mouth - tubular pontil scar, pint; (lighter than usual impression at the shoulder).

GI-83 Beautiful color, rare mold and in fine condition. Very rare. \$4000-8000



39. **"The / Fish Bitters" Figural Bottle**, America, 1860-1880. In the form of a fish, golden yellow with an olive tone, small applied round collared mouth - smooth base, ht. 11 3/4 inches.

R/H #F46 Fine condition, beautiful color. \$2500-5000

40. **"Old Dr. / J. Townsend's / Sarsaparilla / New York" Medicine Bottle**, America, 1845-1860. Square with beveled corners, light sapphire blue, applied sloping collared mouth - iron pontil mark, ht. 9 1/4 inches; (some very minor exterior light wear and scratches).

D#206 A unique color, good condition, strong embossing. \$1000-2000



41. **Eagle - "Willington/Glass, Co." Historical Flask**, Willington Glass Works, West Willington, Connecticut, 1845-1860. Medium to deep forest green, sheared mouth - huge pontil scar, quart; (three 1 inch wear spots on the lettered side of the flask).

GII-61 Beautiful color, strong embossing, rare and huge pontil scar. Ex Charles B. Gardner collection. \$2500-5000

42. **"Catawba / Wine / (Bunch of Grapes) / Bitters / (Bunch of Grapes)" Bitters Bottle**, America, 1845-1860. Square with beveled corners, emerald green with a hint of blue, applied sloping collared mouth with ring - large iron pontil mark, ht. 9 5/8 inches; (5/16 inch vertical hairline fissure in the sloping collar).

R/H #C85 Rare bottle, extremely rare color, beautiful example, strong embossing. \$4000-8000

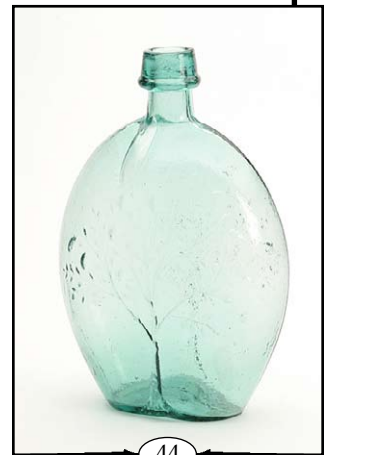


43. **Freeblown Deep Bowl**, probably Lockport Glass Works, Lockport, New York, 1843-1860. Straight sided form, slightly flared to the rim, Lockport blue, tooled rim - pontil scar, ht. 4 inches, rim dia. 5 3/4 inches, base dia. 4 1/2 inches.

Early, beautiful utility bowl, fine condition. \$1500-3000

44. **Summer Tree - Summer Tree Pictorial Flask**, Baltimore Glass Works, Baltimore, Maryland, 1845-1860. Light to medium bluish green, applied sloping collared mouth with ring - pontil scar, quart.

GX-18 Delicate color, strong embossing, fine condition. \$1000-2000







45

45. **Masonic Arch and Emblems - Eagle Historical Flask**, probably Keene Marlboro Street Glassworks, Keene, New Hampshire, 1820-1830. Light clear green, tooled mouth - pontil scar, half pint. GIV-13 Fine condition, bright color, good embossing. Rare. \$750-1500

46. **"ST / Nicholas / Stomach / Bitters" - "Imported / By / Gentry / & Otis, N.Y." Figural Bitters Bottle**, America, 1845-1860. Wedge form, deep honey amber, applied sloping collared mouth - iron pontil mark, ht. 7 1/8 inches; (appears to be professionally cleaned with some remaining flaws, one corner may have been ground to remove a flake). R/H #S17 Extremely rare. \$3000-6000



46



47

47. **Whale Oil Lamp**, possibly an early Pittsburgh glasshouse, Pittsburgh, Pennsylvania, 1820-1840. Bulbous font on a sausage turned stem with a large applied shallow dished foot, colorless, tooled mouth - pontil scar, ht. 7 3/4 inches; (no burner). Similar to Pittsburgh Glass by Lowell Innes, plate 34 #2 A beautiful lamp, great form, nice condition. Ex John Gordon, Kennebunkport, Maine. \$1000-2000

48. **Eagle - Cornucopia Historical Flask**, Pitkin Glass Works, Manchester, Connecticut, 1815-1830. Light yellow olive, sheared mouth - pontil scar, half pint. GII-58 Fine condition, extremely rare with very few known examples. An important bottle for any flask collection. \$15000-30000



48



49

49. **"Genuine / Phoenix / Sarsaparilla / Louisville KY" Medicine Bottle**, America, 1845-1860. Rectangular with wide beveled corners, deep blue aquamarine, crudely applied sloping collared mouth - iron pontil mark, ht. 9 3/4 inches, wdth. 3 7/8 inches, dpth. 2 3/4 inches. D#166 Great condition, strong embossing, good color. Extremely rare. \$1200-2400

50. **Pressed Glass Miniature Pitcher and Bowl Set**, probably Boston and Sandwich Glass Works, Sandwich, Massachusetts, 1840-1860. Opalescent, overall ht. 2 5/8 inches, bowl dia. 3 1/8 inches; (some minor flaws). B/K #3316 Extremely rare, early toy pressed glass item. \$750-1500



50



51

51. **Freeblown Apothecary Vessel**, New England, 1830-1860. Bulbous bowl with large slightly flared short neck to rim, applied solid circular foot, deep yellow olive, tooled rim with pour spout - pontil scar, ht. 3 7/8 inches, base dia. 4 inches; (some exterior high point wear). Form generally similar to McK plate 72 #7 An unusual item, early and interesting. \$1500-3000

52. **"E.L." Eagle - Cornucopia Historical Flask**, Frederick Lorenz Manufacturer, Pittsburgh, Pennsylvania, 1830-1850. Blue aquamarine, almost ice blue, sheared mouth - pontil scar, half pint. GII-15 Very rare, fine condition, strong embossing, bright clean color. \$800-1600



52





53

53. **Pattern Molded Pitcher**, twenty four ribs swirled to the right, Zanesville, Ohio, 1820-1840. Pleasing bulbous form with applied ribbed handle, deep greenish aquamarine, tooled mouth with pour spout - pontil scar, ht. 5 1/2 inches, base dia. 3 1/2 inches; (numerous lower handle attachment cracks, varying in length from a half inch to two inches, these are undoubtedly heat checks created by improper annealing at the time of manufacture).

Similar to TH plate 40 #4 Great form, wonderful color, typical Zanesville, Ohio form. Ex Courtney collection. \$1500-3000



54

54. **"General Washington" And Bust - "T.W.D." And Eagle Portrait Flask**, Kensington Glass Works, Philadelphia, Pennsylvania, 1820-1840. Brilliant deep sapphire blue, sheared mouth - pontil scar, pint.

GI-14 Exceptional color, strong embossing, fine condition with minor wear. \$50000-100000



55

55. **"C. Brinckerhoffs / Health Restorative" Medicine Bottle**, America, 1840-1860. Rectangular with beveled corners, medium to deep yellow olive, applied sloping collared mouth - pontil scar, ht. 7 3/8 inches.

N #75 Good early medicine bottle in fine condition. \$1200-2400



56

56. **Freeblown "MSM / MT. Vernon / Glass Co" Sealed Spirits Bottle**, Mount Vernon Glass Works, Vernon, New York, 1810-1820. Cylindrical with an applied seal on the shoulder, deep clear green, irregular laid on mouth ring - pontil scar, ht. 8 1/2 inches, base dia 3 7/8 inches; (3/4 inch shoulder bruise to the right of the seal, extensive restoration to the base to include replaced glass pieces together with some epoxy).

McK page 427, third paragraph. Extremely rare, one of very few documented American sealed wine bottles. Ex Richmond "Boo" Morcum collection. \$2000-4000



57

57. **Masonic Arch And Emblems - "J.K / B" Eagle Historical Flask**, Keene Marlboro Street Glassworks, Keene, New Hampshire, 1820-1830. Colorless with purple striations in the lower third of the bottle, tooled mouth - pontil scar, pint; (1/4 inch chip on the top of the mouth on the eagle side).

GIV-3 Strong embossing, unusual color for this early masonic flask. \$1000-2000



58

58. **Dr. Birmingham's / Anti Billious / Blood Purifyer" Medicine Bottle**, America, 1860-1870. Cylindrical with narrow indented panels, grass green, tooled double collared mouth - smooth base, ht. 8 1/2 inches; (some light interior stain).

Great color, fine condition. \$800-1600



59

59. **Pattern Molded Sugar Bowl**, eight pillar molded ribs, Pittsburgh district, Pittsburgh, Pennsylvania, 1840-1850. Bulbous bowl with galleried rim and matching lid, applied knopf stem and circular foot, colorless with a gray cast, sheared rim - pontil scar, overall ht. 9 5/8 inches; (lid has 1/4 inch inside chip at rim).

Similar example shown in "Pittsburgh Glass" by Lowell Innes, plate 188. Large, graceful form, fine condition. \$1000-2000



60

60. **Early Scent Bottle**, probably America, 1820-1840. Coin shaped with large medial ribs extending into the center of the bottle toward a large convex circular button, golden amber, sheared mouth - pontil scar, ht. 2 1/2 inches; (some exterior wear on the concave buttons on each side).

Similar to items on M/W plate 105 Fine condition, unusual and beautiful. \$750-1500





61

61. **Blueberry Preserve Bottle**, Willington Glass Works, West Willington, Connecticut, 1860-1873. Cylindrical with fluted shoulders and neck, golden amber, applied double collared mouth - smooth base, ht. 11 1/8 inches. Similar to MW plate VIII#4 Fine condition. \$800-1600



62

62. **Freeblown Fish Bowl**, early Pittsburgh district, Pittsburgh, Pennsylvania, 1830-1850. Globular bowl on applied hollow pedestal, colorless with a blue rim at the mouth and a blue ring at the base, tooled mouth - pontil scar, ht. 12 1/4 inches, greatest dia. 8 1/2 inches; (some fine interior scratches at the base of the bowl, probably where it was cleaned.) We have seen many fish bowls but never one with this blue ornamentation. Ex Jack Squires collection, ex Dorothy Sutton collection, Sewickley, Pennsylvania. \$1000-2000



63

63. **"Wells Miller & Provost." Pickle Jar**, America, 1840-1860. Cylindrical with fluted shoulders and a diamond pattern band at the base together with a band of the embossed lettering at the shoulder, bright green, outward rolled mouth - tubular pontil scar, ht. 10 inches; (some minor mouth roughness appears to be done at the time of manufacture, a pontil chip which was not removed with a punt rod still remains, light inside stain ring near the base). Form similar to MW plate 73 #8 Beautiful color, strong embossing, fine condition. Rare. \$1500-3000



64

64. **Cathedral Pickle Jar**, Willington Glass Works, West Willington, Connecticut, 1840-1860. Square with fancy cathedral arch panels, bright medium green, outward rolled mouth - pontil scar, ht. 13 1/2 inches; (potstone with two fine short lines in the arches of one panel). Similar design to MW plate 73 #4 Fine condition, unusually large mouth. Ex Charles B. Gardner collection. \$2000-4000



65

65. **Sheaf of Wheat - "Baltimore / (Anchor) / Glass Works" Pictorial Calabash Flask**, Baltimore Glass Works, Baltimore, Maryland, 1845-1860. Sapphire blue, applied double collared mouth - pontil scar, quart. GXIII-52 Beautiful color, fine condition, stronger embossing than most that we have encountered. \$5000-10000



66

66. **Blown Three Mold "Whiskey" Decanter with Matching Stopper**, Boston and Sandwich Glass Works, Sandwich, Massachusetts, 1820-1840. Bulbous with a long neck, colorless, flared mouth with period stopper - pontil scar, quart; (some minor stain at the very bottom may wash out). GIV-7 Fine early decanter with the rare "Whiskey" embossing. \$750-1500



67

67. **Cathedral Pickle Jar**, Willington Glass Works, West Willington, Connecticut, 1840-1860. Square with fancy cathedral arches, bright green, outward rolled mouth - pontil scar, ht. 11 1/2 inches. Similar design to MW plate 73 #4 Beautiful bottle, fine condition. \$1200-2400



68

68. **Freeblown Pitcher and Bowl Set**, probably Suncook Glass Works, Suncook, New Hampshire, 1839-1850. Free-blown deep bowl flaring to an outward rolled rim, the pitcher is squatty and somewhat deformed with an applied strap handle and sheared rim with no spout, shades of aquamarine and light blue green, tooled mouths - pontil scars, bowl ht. 4 3/4 inches, bowl rim dia. 12 inches, pitcher ht. 7 inches, pitcher greatest dia. 5 1/2 inches; (some minor expected wear and scratches mainly to the pitcher). Acquired in the Suncook, New Hampshire area in the 1940s-1950s. Ex Carl Lidbeck collection, Hookset, New Hampshire. \$2000-4000





69

69. **Stiegel Type Pattern Molded Creamer**, twelve diamond pattern, possibly American Flint Glass Manufactory, Manheim, Pennsylvania, 1769-1774. Slightly bulbous form, solid applied handle and solid applied circular base, deep cobalt blue, sheared rim with pour spout - pontil scar, ht. 4 1/4 inches.

Similar to McK plate 23 #9 Beautiful dense cobalt blue with an extremely strong diamond pattern. Fine condition. Ex George McKearin collection, retains old McKearin label. \$1000-2000



70

70. **Freeblown Sugar Bowl**, Pittsburgh district, Pittsburgh, Pennsylvania, 1840-1850. Elongated bulbous bowl and an applied short standard with solid circular foot, colorless with white loopings on a colorless base, tooled galiered rim with matching cover - pontil scar, overall ht. 8 1/2 inches. Similar to tableware forms in Pittsburgh Glass by Lowell Innes plates 48 and 49 A wonderful early sugar bowl in fine condition. \$1500-3000



71

71. **Eagle - "Willington/Glass Co." Historical Flask**, Willington Glass Works, West Willington, Connecticut, 1845-1860. Bright yellowish green, sheared mouth - tubular pontil scar, pint.

GII-64 Fine example with good embossing, beautiful color, fine condition. \$750-1500



72

72. **"G.H. Barnard / Importer / Troy N.Y." Whiskey Bottle**, America, 1860-1870. Square with beveled corners, beautiful light yellow amber with an aquamarine stopper, applied sloping collared mouth with ring and inside screw threading with a matching aquamarine inside screw stopper - smooth base, overall ht. 9 1/2 inches; (an unearthened bottle, professionally cleaned with some minor remaining scratches, 3/16 inch chip on the side of the mouth).

Beautiful bottle, the only known example currently. The aquamarine stopper was unearthened in the bottle, so probably is the correct closure. \$1000-2000



73

73. **Clasped Hands - Eagle Historical Flask**, Pittsburgh district, Pittsburgh, Pennsylvania, 1860-1870. Light to medium citron, applied mouth with ring - smooth base, quart.

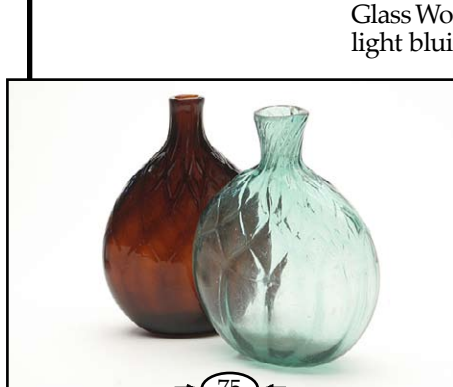
GXII-7 Fine condition, beautiful and unusual color. \$1500-3000



74

74. **"Jno. Moffat / Price \$ 1 / New York / Phoenix / Bitters" Bottle, America**, 1840-1860. Rectangular with beveled corners, yellow amber with an olive tone, small applied round collared mouth - pontil scar, ht. 5 1/2 inches.

R/H #M110 Fine example, good color, strong embossing, early. \$750-1500



75

75. **Two Pattern Molded Pocket Flasks**, ten diamond pattern, Zanesville Glass Works, Zanesville, Ohio, 1820-1840. Deep golden amber and bright light bluish green, sheared mouths - pontil scars, ht. 5 inches and 5 1/4 inches; (green example has one inch vertical crack from the top of the mouth into the neck, exterior high point wear in the fluted base portion of the bottle, amber example has pinhead size mouth flake).

Similar to MW plate 97 #4 Fine colors, good early Zanesville flasks. \$750-1500



76

76. **"Wood's / Black Ink / Portland." Ink Bottle**, probably a Stoddard glasshouse, Stoddard, New Hampshire, 1840-1860. Cone form, sheared mouth - tubular pontil scar, ht. 2 inches.

Form similar to C#12 Great color, fine condition, rare. \$2000-4000





77

77. **Eagle - "New London / (Anchor) / Glass Works" Historical Flask**, New London Glass Works, New London, Connecticut, 1856-1860. Bluish green, sheared mouth - pontil scar, half pint. GII-67 Heavy whittled appearance. Beautiful color, fine condition, strong embossing. \$2000-4000

78. **Sunburst Flask**, Pitkin Glass Works, Manchester, Connecticut, 1815-1830. Light yellow olive, sheared mouth - pontil scar, pint; (some high point wear where the rays of the sunburst merge towards the center circle). GVIII-7 Fine example, beautiful color. Ex Edmund and Jayne Blaske collection. \$2000-4000



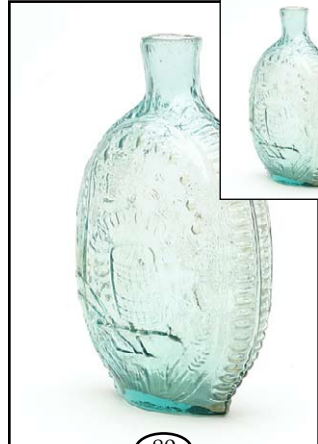
78



79

79. **"Phelps's / Arcanum / Worcester / Mass." Medicine Bottle**, a New England glassworks, 1840-1860. Cylindrical with narrow vertical panels, four of which are embossed, yellow olive, applied sloping collared mouth with ring - pontil scar, ht. 8 5/8 inches; (shallow 3/4 inch bubble burst on base ring). N#493 Fine condition, good color, big pontil scar. \$1500-3000

80. **"Hard Cider" with Flag, Barrel and Plow - Log Cabin Historical Flask**, early Pittsburgh district, Pittsburgh, Pennsylvania, 1820-1840. Brilliant aquamarine, sheared mouth - pontil scar, pint. GX-22 Fine color, superb condition, probably the strongest impression we have ever seen on both sides of the flask. If you want the best, this may be it. \$12000-24000



80



81

81. **"Granite / Glass / Co" - "Stoddard / NH" Lettered Flask**, Granite Glass Works, Stoddard, New Hampshire, 1846-1860. Light yellow olive, sheared mouth - tubular pontil scar, quart. GXV-6 Rare New England bottle, fine condition, good color, strong embossing. Ex Edmund & Jayne Blaske collection. \$1000-2000

82. **"Jos: / Risdon / 1818" Sealed Wine Bottle**, probably England, circa 1818. Cylindrical with circular seal mounted at mid body, deep yellow olive, applied short sloping collared mouth - pontil scar, ht. 9 3/8 inches, base dia. 4 inches. Form similar to McK plate 221 #10 Fine example, great condition. Ex Charles B. Gardner collection #2943. \$1000-2000



82



83

83. **Pattern Molded Creamer**, ten diamond pattern, Zanesville Glass Works, Zanesville, Ohio, 1820-1850. Bulbous body flaring outward to rim, solid strap handle, light to medium blue green, inward tooled rim with pour spout - pontil scar, ht. 4 1/2 inches, greatest dia. 3 1/2 inches, mouth dia. 3 1/2 inches; (a faint, almost invisible, 1 inch manufacturer's heat fissure at upper handle attachment). Similar to McK plate 9 #2 A magnificent piece of early pattern molded glass. The finest in form, pattern and strength of mold. \$10000-20000

84. **"For Pike's Peak" and Prospector - Hunter Shooting Deer Historical Flask**, probably Ravenna Glass Works, Ravenna, Ohio, 1860-1870. Golden amber, applied round collared mouth - smooth base, pint; (an area of irregular base wear). GXI-50 Beautiful unlisted color, strong embossing, fine condition. \$2000-4000



84





85

85. "Layfayette" and Bust - Masonic Arch and Emblems Portrait Flask, Mount Vernon Glass Works, Vernon, New York, 1824-1825. Yellow olive, round tooled mouth - pontil scar, half pint; (some light high point wear).

GI-89 Strongly embossed, good clear color, fine condition. \$2500-5000



86

86. "Bryant's / Stomach / Bitters" Figural Bottle, America, 1840-1860. Octagonal body with a lady's leg neck, yellow green, applied sloping collared mouth with ring - pontil scar, ht. 12 inches.

R/H #B243 Found in a San Francisco attic, possibly the finest example known. \$4000-8000



87

87. Lot Of Approximately 1475 "Dr. McMunn's / Elixir of Opium" Medicine Bottles, America, 1835-1860. Cylindrical, aquamarine, flared mouths and inward rolled mouths - pontil scars, ht. 4 inches, base dia. 3/4 inch; (as found, many with medicine residue which will wash out, some of the flared mouth examples have damage).

N#437 This most unusual cache of early medicine bottles was found in the roof eaves of a three story building in Webster, Massachusetts. A most interesting find. \$10000-20000



88

88. "BP & B" Scroll Flask, Bakewell, Page & Bakewell, Pittsburgh, Pennsylvania, 1845-1860. Aquamarine with amber striations, sheared mouth - pontil scar, half pint.

GIX-39 Brilliant color, interesting striated example. \$1000-2000



89

89. Freeblown Bowl, possibly Congressville Glass Works, Saratoga, New York, 1844-1860. Small deep slightly bulbous bowl with a very large flared rim culminating in an upturned lip much like a short galleried rim, emerald green, tooled rim - pontil scar, ht. 2 3/8 inches, bowl dia. 3 1/2 inches, rim dia. 6 1/4 inches.

Similar to Congressville tableware McK plate 69 A most unusual bowl, early, beautiful color and a very different configuration. Ex George McKearin collection, ex George Austin collection. \$1500-3000



90

90. Washington Bust and "Albany Glass Works / Albany NY" Sailing Frigate Portrait Flask, Albany Glass Works, Albany, New York, 1847-1850. Brilliant yellowish olive, applied sloping collared mouth - tubular pontil scar, pint; (some minor exterior high point wear on the Washington bust).

GI-28 Exceptional, extremely rare color, fine condition, strong embossing. \$12000-24000



91

91. "Jenny Lind" and Bust - "(Glasshouse) / S. Huffsey" Portrait Calabash Flask, probably Isabella Glass Works, New Brooklyn, New Jersey, 1845-1860. Sapphire blue, applied sloping collared mouth - large tubular pontil scar, quart.

GI-99 Beautiful color, strong embossing, fine condition. \$7500-15000



92

92. "Hampton's / B. Tincture / Mortimer / & Mowbray / Balto." Medicine Bottle, probably Baltimore Glass Works, Baltimore, Maryland, 1840-1860. Oval, deep strawberry puce, applied square collared mouth - tubular pontil scar, ht. 6 1/4 inches.

N #277 Beautiful deep color, strong embossing, fine condition. \$1000-2000





93

93. **Eagle - "New London / (Anchor) / Glass Works" Historical Flask**, New London Glass Works, New London, Connecticut, 1860-1866. Aquamarine, sloping collared mouth - smooth base, quart. GII-66 An exceptional example with a brilliant whittled strong aquamarine color. Exceptional embossing, fine condition. \$1200-2400



94

94. **Freeblown Vase**, probably a Stoddard glasshouse, Stoddard, New Hampshire, 1840-1860. Flared upper vase portion with a bulbous center portion and a circular base all from one gather, reddish amber, tooled rim - pontil scar, ht. 6 7/8 inches. Similar forms of bottle glass vases McK plate 71A #2 and #4 A fine early piece of freeblown glass. \$1500-3000



95

95. **Blown Three Mold and Pressed Glass Lamp**, Boston and Sandwich Glass Works, Sandwich, Massachusetts, 1820-1840. Light bulb form blown three mold font attached with a wafer to an octagonal pressed glass base, colorless, tooled mouth with period burner - tubular pontil scar, ht. 7 3/4 inches; (3/4 inch chip on the top of the hexagonal base). GV-18 An excellent example, extremely rare. \$1000-2000



96

96. **"E.G. Booz's / Old Cabin Whiskey" Figural Bottle**, Whitney Glass Works, Glassboro, New Jersey, 1860-1880. In the form of a two story (cabin) house, golden amber, applied sloping collared mouth - smooth base, ht. 7 1/4 inches. Identified as a GVII-5 in McKearin because of the two dots beneath the T in Street. Good color, strong embossing, fine condition. \$2000-4000



97

97. **Freeblown Bowl**, probably New Geneva Glass Works, New Geneva, Pennsylvania, 1800-1810. Large deep bowl on a slightly conical circular base and short stem, light yellowish green, sheared rim - pontil scar, ht. 4 1/4 inches, greatest bowl dia. 4 1/2 inches. Beautiful early bowl in fine condition. \$2000-4000



98

98. **"Layfayette" And Bust - "DeWitt Clinton" And Bust Portrait Flask**, Coventry Glass Works, Coventry, Connecticut, 1824-1825. Light bright yellow olive, sheared mouth - pontil scar, pint. GI-80 Strong embossing, beautiful light color, fine condition. \$2000-4000



99

99. **Pattern Molded Salt Cellar**, checkered diamond pattern, probably Amelung Glass Works, Frederick, Maryland, 1785-1797. Double ogee bowl with a short stem of the same gather on a plain circular foot, cobalt blue, sheared rim - pontil scar, ht. 2 7/8 inches, bowl dia. 2 1/2 inches. Similar to McK plate 32 #5 and TH plate 2 #6 Early, beautiful and perfect. \$3000-6000



100

100. **Masonic Arch And Emblems - "J. Sheppard & Co / Zanesville / Ohio" and Eagle Historical Flask**, J. Sheppard & Company Manufacturers, Zanesville, Ohio, 1820-1830. Light blue green, tooled mouth - tubular pontil scar, pint. GIV-32 Strong embossing, beautiful and unusual color, fine condition. \$1200-2400



## CONDITIONS OF SALE

1. **Absentee Auction:** The items in this catalog will be sold at unreserved **absentee auction**, closing date Wednesday, October 27, 2010.
2. **Descriptions:** Norman C. Heckler & Company has made every attempt to describe correctly the property being sold. Descriptions are guaranteed to be accurate as regards authenticity, age, condition, and measurements to within one-fourth inch, as represented in this catalog. In describing damage, exterior wear or manufacturer's flaws that in our opinion, do not significantly detract visually or monetarily from the value of the item are not listed and will not be considered for refund. The Auctioneers reserve the right to make verbal corrections and provide additional information at any time during the sale.
3. **Preview :** Items may be viewed by appointment from October 9, 2010 through October 25, 2010.
4. **Bidding Procedure:** Bidding on an item may be done in one of four ways: 1. Bidding by telephone, 2. Bidding by Mail, 3. Submitting bids by Fax or 4. Bids submitted by Email (valid only if bid is confirmed by Norman C. Heckler & Company) must be made on or before October 26, 2010.

Your bid, either written or oral, grants Norman C. Heckler & Company the authority to protect you up to the amount of your stated bid. **Your bid will not be removed once executed.**

You may telephone us at any time (weekdays 9 A.M. - 5 P.M.) during the auction, prior to the closing of the sale, to check the status of your bids, to find the current bidding level, to open a bid, or to raise a bid on an auction lot.

### MINIMUM BID IS ONE-HALF THE LOW ESTIMATE

	<i>Increments are as follows:</i>	
Up to \$250.00.....increments of <b>\$10.00</b>		\$500.00 - \$1000.00.....increments of <b>\$50.00</b>
\$250.00 - \$500.00.....increments of <b>\$25.00</b>		\$1000.00 - \$2500.00.....increments of <b>\$100.00</b>
\$2500.00 - \$5000.00.....increments of <b>\$250.00</b>		\$5000.00 - \$10000.00.....increments of <b>\$500.00</b>
	\$10,000 & Up.....increments of <b>\$1000.00</b>	

An example - You bid \$900.00 on a lot which is the highest bid received to date. The second highest bid is \$550.00. The current high bidding level would be yours at \$600.00. Any other bids submitted by others below \$900.00 will be automatically topped by a representative of Norman C. Heckler & Company, bidding on your behalf.

Norman C. Heckler & Company will not disclose bids pledged by others; only the current bidding level of a lot will be stated upon request.

The highest bidder shall prevail. It is the sole right of the auctioneer to settle any dispute between bidders and to regulate the bidding procedure. The auctioneer reserves the right to refuse any bid he believes not to have been made in good faith.

Each lot in the sale has an estimate based on current value as an intended guide to bidding. Bids may be made by phone, daily, until closing day, October 27, 2010, from 9 A.M. - 5 P.M. Eastern Time. Incoming phone bids will be accepted on the closing day (Wednesday, October 27, 2010) until 10 P.M. Eastern Time. Calls and Fax bids after this time will not be honored. **No exceptions.**

Do not depend on timely mail delivery. We urge you to send your mail bids as early as possible. We are pleased to receive bids by telephone so that we can answer any questions and assist you in your bidding. As the closing date nears (one week before deadline) please phone or Fax your bids to avoid the inevitably jammed telephone lines.

5. **Return Call or "Call Back" Process:** If requested, the three top bidders of an item at the time of closing will be given a "Call Back" over the next number of days in order to resolve the final sale of an item. You can request this service by "checking" the appropriate box on your absentee bid form or verbal agreement by telephone.

If you have requested a "Call Back", the auctioneers will need to contact you on the days following the auction closing between the hours of 8 A.M. and 9 P.M.. Eastern Time. Bidders must provide the appropriate telephone numbers where they can be contacted. Bidders who are in transit must call Norman C. Heckler & Company during the Call Back period twice daily. Bidders with Call Back privileges on an item may call Norman C. Heckler & Co. when timing on that item seems essential.

**Only the top three bidders at the sale closing are entitled to "Call Backs".** It is the responsibility of the bidder to insure he has qualified for this service.

**The bidder will forfeit his rights to a "Call Back" if the auctioneers are unable to reach that bidder.**

**No "Call Backs" will be executed for bids under \$1000.00. In the event of tie bids, the earliest received bid will be the winning bid.**

Norman C. Heckler & Company reserves the right to discontinue "Call Backs" (3) three days after the closing date of the sale.

6. **Successful Bidders:** Successful bidders will be notified by mail. A 17% buyer's premium will be added to the hammer price to be paid by the buyer as part of the purchase price. Payment is due immediately upon receipt of notification of purchase. **No exceptions.**

If you are a Connecticut resident, a 6% sales tax will be added to your bill, unless you provide Norman C. Heckler & Company with a tax exemption permit. Sales tax is also applicable to out of state buyers who pick up their purchases at our location unless you have a tax exempt number from Connecticut or your state on file with us. Purchases will be shipped only after full payment has been received. All items will be shipped via United States Postal Service. Shipping, handling and insurance are extra. Our charges for shipping (excluding foreign shipments) are \$20.00 for the first item, \$9.00 for each additional item together with extra insurance costs (\$0.60 per \$100.00). **We encourage you to plan for a pickup of your items at our offices.**

7. **Refunds:** Refunds will be given at the discretion of the Auctioneers. Item purchased must be examined and request for refund made **immediately** upon receipt of the item or items. Since opinions can differ, particularly in the matter of condition, the Auctioneers will be the sole judge in the consideration of refunds. Refunds requested on the grounds of authenticity must be made within 15 days of the date of the auction, and such refund requests must be accompanied by at least one supporting statement in writing from an authority recognized by the Auctioneers. **Absolutely no returns after 30 days of the closing of the sale.** It is the Auctioneers sincere intention to consider any reasonable request for a refund.

8. **Bidding on any item indicates your acceptance of these terms.**



**Norman C. Heckler & Company**  
Auctioneers & appraisers specializing in early glass & bottles  
79 Bradford Corner Road, Woodstock Valley, Connecticut 06282  
(860) 974-1634 www.hecklerauction.com fax (860) 974-2003  
email: info@hecklerauction.com